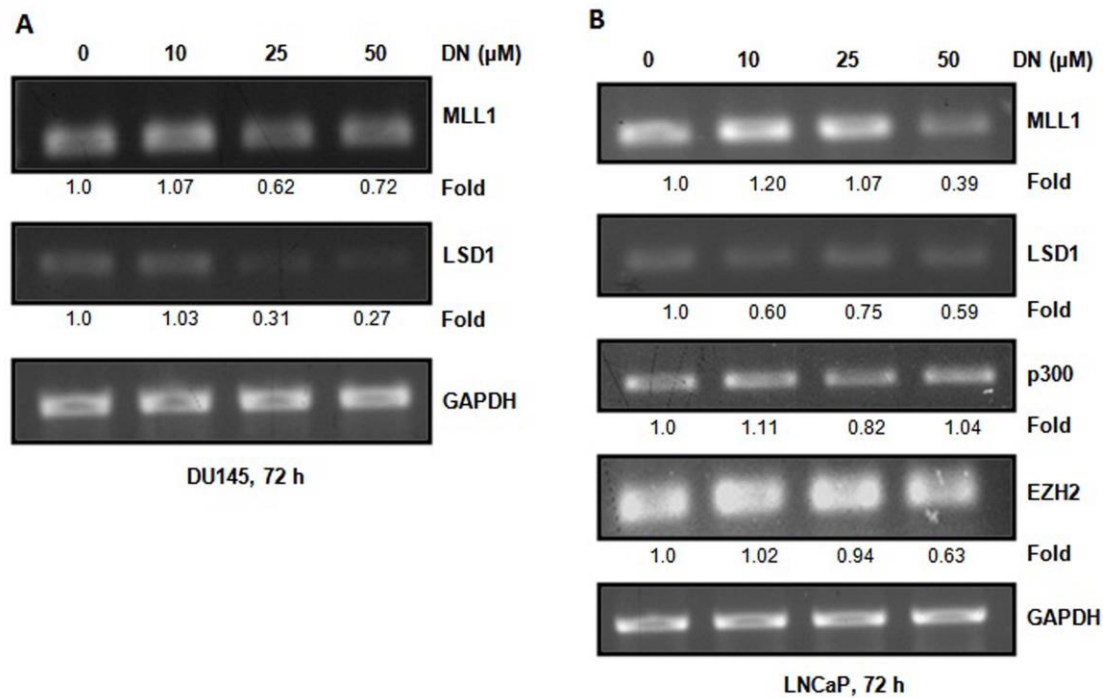


Supplementary Table 1: Primers for methylation-specific PCR (MS-PCR)

Gene	Forward primer sequence (5'-3')	Reverse primer sequence(5'-3')
GSTP1 M	TTCGGGGTGTAGCGGTCGTC	GCCCCAATACTAAATCACGACG
GSTP1 U	GATGTTTGGGGTGTAGTGGTTGTT	CCACCCCAATACTAAATCACAACA
CyclinD2 M	TACGTGTTAGGGTCGATCG	CGAAATATCTACGCTAAACG
CyclinD2 U	GTTATGTTATGTTTGTGTATG	TAAAATCCACCAACACAATCA
p16 M	TTATTAGAGGGTGGGGCGGATCGC	GACCCCGAACCGCGACCGTAA
P16 U	TTATTAGAGGGTGGGGTGGATTGT	CAACCCCAAACCACAACCATAA
E-Cadherin M	TGTAGTTACGTATTTATTTTTAGTGGCGTC	CGAATACGATCGAATCGAACCG
E-Cadherin U	TGGTTGTAGTTATGTATTTATTTTTAGTGGT GTT	ACACCAAATACAATCAAATCAAACC AAA
TIMP3 M	CGTTTCGTTATTTTTTGTTCGGTTTC	CCGAAAACCCCGCCTCG
TIMP3 U	TTTTGTTTTGTTATTTTTTGTTCGGTTTT	CCCCAAAACCCACCTCA

Supplementary Table 2: Primers for semi-quantitative RT-PCR

Gene	Forward primer sequence (5'-3')	Reverse primer sequence (5'-3')
HDAC1	GAGTACTTCCCAGGAACTGG	GTAGTCATTGTATGGAAGCTC
HDAC2	ACAACAGATCGTGTAATGACGG	CAACTCATTGGGAATCTCACAATC
HDAC3	CTTCACACTTCATCCAGATG	TTCCCAGAGTCAGCAAAAAGC
DNMT1	ACCGCTTCTACTTCCTCGAGGCCTA	GTTGCAGTCCTCTGTGAACACTGTGG
DNMT3A	CACACAGAAGCATATCCAGGAGTG	AGTGGACTGGGAAACCAAATACCC
DNMT3B	ACAAGAGCAGCCTGGAAGATG	ACACTTCAGAAGCGACGTACT
GAPDH	GGTCGGAGTCAACGGATTTGGTCG	CCTCCGACGCCTGCTTCACCAC
MLL1	AAGCTTCCAATGACTGACAAG	ACATTTTCTCATCTTGCAGCAC
LSD1	ATAAGCCTGTGTCCCTTGGC	TCACTTGGGGGATTTCGCTTC
p300	TAAGATGGGAATGATGAACAACCCC	TCTCTTATCACCAGCATTTTTGAGG
EZH2	GTGGAGAGATTATTTCTCAAGATG	CCGACATACTTCAGGGCATCAGCC



Supplementary Figure 1: Effect of decursin on mRNA expression of some of the epigenetic in DU145 and LNCaP cells. **(A,B)** Representative agarose gel electrophoresis images of semi-quantitative RT-PCR showing differential mRNA expression of MLL1, LSD1, p300, EZH2 in DU145 and LNCaP cells after treatment with different concentrations of decursin for 72 h. DN, decursin; MLL1, Mixed lineage leukemia 1; LSD1, Lysine specific demethylase 1; p300, E1A-associated protein 300; EZH2, Enhancer of zeste homolog 2; GAPDH, glyceraldehyde 3-phosphate dehydrogenase