

# Clinicopathological Evaluation of Gall-Bladder Lesions in Cholecystectomy Specimens with Special Emphasis to Incidentally Detected Cases of Gall-Bladder Carcinoma Along with Immunohistochemical Study of Cytokeratin 7 and Cytokeratin 20

Kakoli Bora, Chandan Jyoti Saikia

Department of Pathology, Fakhruddin Ali Ahmed Medical College & Hospital, Barpeta, Assam, India.

## Abstract

**Introduction:** Cholecystectomy specimens show wide clinicopathological spectrum varying from common non neoplastic diseases to rare neoplastic lesions and histopathological examination the gold standard for final diagnosis. Gall Bladder Cancers (GBCs) are rare and account for 0.5% to 1.09% of all gall bladder lesions. It is either clinically suspected or incidentally diagnosed following cholecystectomy. **Methods:** It was a Hospital based cross-sectional Study. All cases diagnosed clinically & radiologically and operated as cholecystitis were included in the study. Histopathological diagnosis of gallbladder lesions, age & sex distribution in different gallbladder pathology, association with gall stones, Pathological pT staging of malignant cases and CK7 & CK20 immunohistochemical findings in malignant cases were observed in this study. **Results:** A total 340 cases of gallbladder specimens were examined histopathologically and 12 cases of gallbladder carcinoma were diagnosed. The most common histopathological diagnosis was chronic cholecystitis (79.4%) followed by chronic cholecystitis with cholesterolosis (7.6%) and adenocarcinoma (3.5%). The most common age group for gallbladder lesions was 4<sup>th</sup> decade (26.2%). Age varies from 09 – 85 years with a mean age of 39.4 years. Overall females (83%) are more commonly affected than males (17%) with male: female ratio is 1:4.96. Gallstones were present in 89.1% among total cases, 83.3% in malignant cases. Incidentally detected gallbladder carcinoma was 1.17% and most common histopathological type was adenocarcinoma NOS with Pathological pT staging was pT1 & pT2 only i.e. early stage. CK7 positivity was found in 91.6% cases and CK20 was positive in 16.7% cases. Both CK7 & CK20 was positive in 16.7% and both CK7 & CK20 was negative in one case (8.33%). **Conclusions:** Although the most common gall bladder histopathology diagnosis is chronic cholecystitis, the possibility of any incidental malignancy needs to be ruled out by mandatory routine histopathological examination of all cholecystectomy specimens.

**Keywords:** Histopathology- Cholecystitis- Gallbladder carcinoma- Immunohistochemistry- CK7- CK20

*Asian Pac J Cancer Care*, 8 (3), 517-523

Submission Date: 06/17/2023

Acceptance Date: 07/25/2023

## Introduction

Gallbladder is the organ where bile is stored and concentrated, which helps in digestion of fat [1]. Cholecystectomy is one of the most frequently performed abdominal operation and the gallstones are one of the major causes of morbidity and mortality all over the world affecting 10% of adult population [2]. In India,

gallstone disease is seven times more common in the north as compared to the south. Northern and Northeastern states of Uttar Pradesh, Bihar, West Bengal, Orissa, and Assam show the high prevalence of the gall bladder disease. This significant difference was attributed to the environmental factors, diet and lifestyle [3,4].

### Corresponding Author:

Dr. Chandan Jyoti Saikia

Department of Pathology, Fakhruddin Ali Ahmed Medical College & Hospital, Barpeta, Assam, India.

Email: chandansaikia8@gmail.com

Cholelithiasis is one of the major gastrointestinal disorders, which is formed due to metabolic problems of hepatobiliary system. It is a major cause of morbidity and mortality throughout the world [5]. The estimated prevalence of gall stone disease in India is 2-29% with 7 times more common in North India than in South India [5,6]. Cholelithiasis cause various changes in gallbladder mucosa ranging from acute cholecystitis, chronic cholecystitis, polyp, empyema, eosinophilic cholecystitis, metaplasia, hyperplasia, dysplasia to carcinoma [7].

Gall Bladder Cancers (GBCs) are rare and account for 0.5% to 1.09% of all gall bladder lesions. It is either clinically suspected or incidentally diagnosed following cholecystectomy for gall stone disease [8].

Cytokeratins are well-described intermediate filament proteins of both normal epithelia and epithelial tumors. Antibodies to several different subtypes of cytokeratin have been available, including cytokeratin 7 (CK7) and cytokeratin 20 (CK20). In normal tissues, CK7 is typically found in simple epithelia from the gastrointestinal tract (including the gallbladder, hepatic ducts and pancreatic ducts), female genital tract (the endometrium and fallopian tube), breast, urinary tract (bladder), and respiratory tract (lung). In contrast, CK20 is found in more complex epithelia from the gastrointestinal tract (such as the gastric and intestinal mucosa), genitourinary tract (urothelium), squamous epithelia from any site, and Merkel cells. Because these cytokeratins usually retain their tissue specificity in their neoplastic counterparts, coordinate expression of these 2 cytokeratins has recently been proposed to help identify the site of origin of various metastatic carcinomas [9].

Studies on various carcinomas suggest that the combined use of Cytokeratin 7 and Cytokeratin 20 may provide helpful information for the discrimination of the origin of metastatic tumours of unknown primary location [10-12]. Again, comparison of the expression pattern of Cytokeratin 7 and Cytokeratin 20 in cases of chronic cholecystitis with lithiasis and in gall bladder carcinoma may highlight possible alterations linking inflammatory and metaplastic changes and carcinoma [13-16].

#### *Aims and Objectives*

The aims & objectives of the present study were -

- To study the histopathological features of different gall bladder lesion with special reference to malignancy.
- To investigate the co-ordinated expression of Cytokeratin 7 and Cytokeratin 20 in histologically confirmed gall bladder carcinoma.

#### **Materials and Methods**

It was a Hospital based cross-sectional Study and included 340 cholecystectomy cases received at the Department of Pathology; Fakhruddin Ali Ahmed Medical College and Hospital during the period of 1 year. Histopathological examination of the gallbladder specimens was done following standard protocols. The specimens those fulfilled the inclusion criteria were included in the study and rest were excluded.

#### *Inclusion criteria*

- Formalin fixed cholecystectomy specimens excised for clinically or radiologically diagnosed gall bladder diseases with or without gall stones, polyp or porcelain gallbladder and received in Pathology Department.

#### *Exclusion criteria*

- Specimens received in a poorly preserved or autolysed state and improperly labelled were excluded from the study.

The study was conducted after getting permitted by the Institutional Ethical Committee under the IEC no. 10552. All the relevant clinical findings were noted and properly formalin fixed specimens were grossed with three sections each from fundus, body and neck region of the gall bladder. Extra sections were also taken from the tumour or any thickened area of wall in clinically suspicious cases of gallbladder cancer.

Sections were processed and were further subjected to Haematoxylin and Eosin (H&E) stain. H&E stain was done using Harris haematoxyline with a regressive staining method. Sections were examined microscopically and histomorphological evaluation for a wide spectrum of gall bladder lesions was done. The neoplastic lesions were further classified according to the latest

2019 WHO Classification of Digestive System Tumours that includes BillIN, ICPN and Carcinoma [17]. Immunohistochemical examination of malignant cases was done using CK7 & CK20 IHC markers following standard protocols.

#### **Results**

Detailed analysis of 340 cholecystectomy specimens was performed under parameters including age, sex, presence of gall stones, histopathological diagnosis, basic pathology of cases, classification of malignant cases with Pathological pT staging, presence of Perineural invasion (PNI) and Lymphovascular invasion (LVI) and CK7 & CK20 immunohistochemical staining status of malignant cases.

#### *A. Histopathological Distribution of the Cases*

There were 12 different types of histopathological

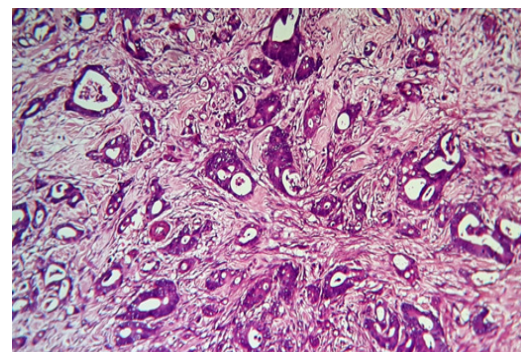


Figure 1. Microphotograph of Moderately Differentiated Adenocarcinoma of Gallbladder Showing Malignant Glands Infiltrating the Perimuscular Connective Tissue (40X)

Table 1. Showing Distribution of Cholecystectomy Specimens According to Histopathological Diagnosis

Serial No	Histopathological diagnosis	No of cases	Percentage %
1	Acute Cholecystitis	4	1.2
2	Acute on Chronic Cholecystitis	2	0.6
3	Chronic cholecystitis	270	79.4
4	Eosinophilic Cholecystitis	1	0.3
5	Xanthogranulomatous Cholecystitis	5	1.5
6	Chronic Cholecystitis with foreign body giant cell reaction	3	0.9
7	Chronic Cholecystitis with epithelial hyperplasia	4	1.2
8	Chronic Cholecystitis with adenomatous hyperplasia	4	1.2
9	Chronic Cholecystitis with antral metaplasia	2	0.6
10	Chronic Cholecystitis with epithelial dysplasia	7	2
11	Chronic Cholecystitis with cholesterosis	26	7.6
12	Adenocarcinoma	12	3.5
	Total	340	100

Table 2. Showing WHO Classification of the Malignant Gallbladder Cases

WHO Type	ICD-O code	No of cases
Adenocarcinoma NOS	8140/3	8
Intracystic papillary neoplasm with associated invasive carcinoma	8503/3	3
Mucinous adenocarcinoma	8480/3	1
Total		12

diagnosis and the most common histopathological diagnosis was chronic cholecystitis (79.4%) followed by chronic cholecystitis with cholesterosis (7.6%) and adenocarcinoma (3.5%). Incidentally detected gallbladder carcinoma (IGBC) is 1.17%. Details were shown in the Table 1.

Among the 340 cases, 311 cases (91.4%) were inflammatory lesion, 08 cases (2.3%) cases were hyperplasia, 02 cases (0.6%) were metaplasia, 07 cases (2%) cases were dysplasia and 12 cases (3.5%) were carcinoma.

#### B. Age Distribution

Age distribution in the present study was from 09 years to 85 years with a mean age of 39.4 years. Again; age distribution in benign lesions of gallbladder cases

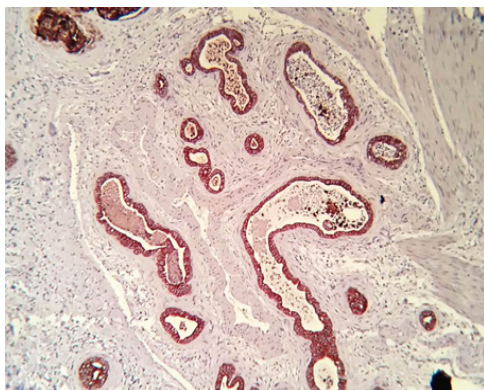


Figure 2. Microphotograph of Adenocarcinoma of Gallbladder Showing IHC Marker - CK7 positivity (10X)

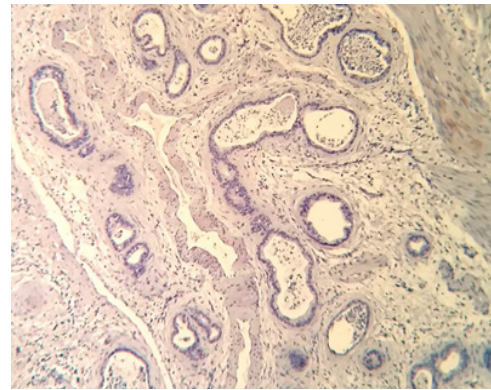


Figure 3. Microphotograph of Above Adenocarcinoma of Gallbladder Showing IHC Marker – CK20 Negative (10X)

was from 09 years to 85 years with a mean age of 38.9 years. Overall, the most common age group was 4<sup>th</sup> decade (26.2%) followed by 3<sup>rd</sup> decade (24.4%) and 5<sup>th</sup> decade (23.5%).

#### C. Sex Distribution

Overall females (83%) were more commonly affected than males (17%) and male: female ratio was 1:4.96. In cholesterosis cases; females (73%) were more commonly affected than male (27%). Again; in both benign and malignant lesions of gallbladder cases; females (83%) were more commonly affected than male (17%). All incidentally detected gallbladder carcinoma (IGBC) cases were observed in females (100%).

Table 3. Showing Pathological pT Staging of the Malignant Gallbladder Cases

Pathological staging	No of malignant cases
pT1	6
· pT1a	· 01
· pT1b	· 05
pT2	5
· pT2a	· 04
· pT2b	· 01
pT3	1
pT4	0
Total	12

#### D. Association of gallstones in the cholecystectomy cases

Out of total 340 gallbladder specimens; gallstones were found in 303 cases i.e. 89%. Again; out of 303 cases; number of male cases were 52 and females were 251 i.e. 82.8%. Out of 12 malignant cases; gallstones were associated with 10 cases i.e. 83%. Gallstones were present in all 07 gallbladder associated with dysplasia (100%).

#### E. WHO classification of the malignant cases

There were total 12 number of malignant cases and they were categorized in Table 2.

#### F. Differentiation of adenocarcinoma NOS cases

There were total 08 number of adenocarcinoma NOS cases and they were classified against their differentiation as:- 06 cases as well differentiated adenocarcinoma and 02 cases as moderately differentiated.

#### G. Pathological pT staging of the malignant cases

According to their pathological pT staging; the malignant cases were categorized in Table 3.

#### H. Perineural invasion (PNI) & Lymphovascular invasion (LVI) status in malignant case

Out of total 12 malignant cases; PNI was observed in 02 cases and both are diagnosed as moderately differentiated adenocarcinoma and pathological pT staging of the cases were pT2a & pT2b. LVI was not seen in any malignant cases.

#### I. Incidentally detected gallbladder carcinoma cases (IGBC)

In this study; 04 cases were detected incidentally with incidence rate of 1.17% (04/340) and all cases were female. Age distribution was 25 years to 60 years with a mean age of 46.25 years. The gallbladder wall thickness was  $\geq 8$  mm in all four cases; which may be one gross finding for gallbladder cancer. Out of total 04 cases; three cases were diagnosed as adenocarcinoma NOS and one case was diagnosed as Intracystic papillary neoplasm with associated invasive carcinoma. Regarding differentiation; 02 cases were diagnosed as well differentiated adenocarcinoma and 01 case as moderately differentiated adenocarcinoma (Figure 1). Pathological pT staging of IGBC cases: 02 cases – pT1 and 02 cases – pT2. Details were shown in Table 4.

#### J. Immunohistochemistry for CK7 & CK20 findings

Out of 12 GBC cases; CK7 was positive in 91.6% (11/12) cases and CK20 was positive in 16.7% (2/12) cases. CK20 positive cases were diagnosed as adenocarcinoma NOS with pathological pT staging of pT1. Total number of CK7 & CK20 positive cases were 02, CK7 positive (Figure 2) & CK20 negative (Figure 3) cases were 09 and both negative cases was 01. Both CK7 & CK20 negative case was diagnosed as mucinous adenocarcinoma (Figure 4 and 5) with pathological staging pT2. Details were shown in Table 5.

## Discussion

In the present study; the most common histopathological diagnosis was chronic cholecystitis (79.4%) which is correlated with other studies like Devi B et al [18] (82%), Mondal B et al [19] (79.8%).

The mean age group of the cholecystectomy cases was 39.4 years which is comparable to Gupta K et al [20] (41.69 years). 4<sup>th</sup> decade was the commonest age group in the present study; which is similar in the studies by Gupta K et al [20] and Islam Mj et al [21]. The age ranged from 25 years to 65 years in malignant gallbladder cases; which is comparable to Shah B et al [22], Bhattacharjee K P et al [23]. In the present study; the upper limit of age is lower than most of the other studies like Dutta U

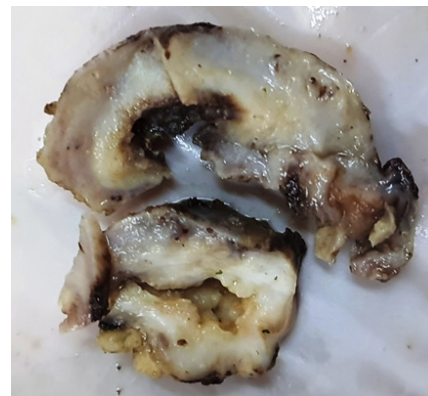


Figure 4. Showing Specimen of Gallbladder Having Thickened Gallbladder Wall (case of mucinous adenocarcinoma of gallbladder).

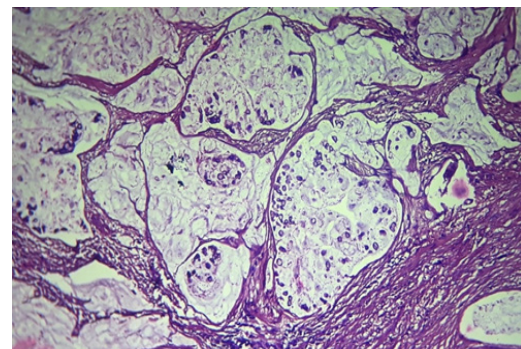


Figure 5. Microphotograph of Mucinous Adenocarcinoma of Gallbladder Showing Pools of Extracellular Mucin (40X)

Table 4. Showing the Detailed Parameters of the Incidentally Detected Gallbladder Carcinoma Cases

Serial No	Age Yrs	Sex	GB wall thickness in millimeter	Histopathological type	Pathological pT staging
1	45	F	08 mm	Well differentiated adenocarcinoma	pT1b
2	55	F	08 mm	Intracystic papillary neoplasm with associated invasive carcinoma	pT1a
3	25	F	15 mm	Moderately differentiated adenocarcinoma	pT2b
4	60	F	08 mm	Well differentiated adenocarcinoma	pT2a

Table 5. Showing the Co-ordinate Expression Status of CK7 and CK20 in Gall Bladder Carcinoma Cases

IHC markers	No of positive cases	Percentage (%)
CK7+/CK20+	02/12	16.70
CK7+/CK20-	09/12	75
CK7-/CK20+	00/12	0
CK7-/CK20-	01/12	8.33

et al [24], Harikleia K et al [25], Hussain N H et al [26], Geramizadeh B et al [27] etc. The mean age in malignant cases was 49.8 years; which is comparable to other studies like Dutta U et al [24], Hussain N H et al [26], Shah B et al [22], Bhattacharjee K P et al [23].

In the present study; the male:female ratio among the cholecystectomy cases was 1:4.96; which is comparable to the studies - Mondal B et al [19] where male:female ratio was 1:4.2, Kumbhakar D et al [28] (1:4.71), Tiwari A et al [29] (1:4) and Gupta K et al [20] (1:3.9). All incidentally detected gallbladder carcinoma cases were found in females. Gall bladder disease is more common in females attributable to female sex hormones and sedentary lifestyle as the risk factors.

Gall stones cause obstruction that leads to development of chronic cholecystitis which, in turn, chronically predisposes to carcinoma of the gallbladder. Around 83.3% cases of gallbladder carcinoma are associated with gall stones in the present study; which is comparable to Kumar H et al [30] (80%) and Tiwari A et al [29] (80%). The incidence of incidentally detected gallbladder carcinoma was 1.17% which is comparable to the studies like Tiwari A et al [29] (1.25%), Yadav R et al [31] (1.26%). This observation is higher than the other studies like Jetley S et al [32] (0.96%) & Kumbhakar D et al [28] (0.75%).

In the present study, the most common type of carcinoma was adenocarcinoma NOS (66.7%) followed by Intracystic papillary neoplasm with associated invasive carcinoma and this observation is comparable to Giang T H et al [33] (60%), Hussain N H et al [26] (57.6%), Shah B et al [22] (71.4%) and Manuela S et al [34] (65.6%). There were 06 cases of well differentiated adenocarcinoma (75%) followed by 02 cases of moderately differentiated adenocarcinoma and 00 cases of poorly differentiated adenocarcinoma. This observation is comparable to other studies like Dutta U et al [24] (71.4% - Well differentiated adenocarcinoma) and Manuela S et al [34] (52.3% - Well differentiated adenocarcinoma). Perineural invasion (PNI) is noted in 02 cases and no case had shown Lymphovascular invasion (LVI). Both are taken as

prognostic parameter for gallbladder carcinoma.

For pathological staging, there were 06 cases in stage pT1 (50%) followed by 05 cases in stage pT2 and one case in stage pT3. This observation is comparable to Siddiqui et al [35] (50% - pT1), Geramizadeh B et al [27] (55.5% - pT1) and Servet K et al [36] (61% - pT1).

Regarding immunohistochemistry findings, out of total 12 cases; 11 cases (91.6%) had shown CK7 positivity; which is higher than other studies like Duval J V. et al [9] (82%), Harikleia K et al [25] (69.05%) and Dursun N et al [37] (57%). Again; 02 cases had shown CK20 positivity (02/12, 16.7%) which is lower than other studies like Duval J V. et al [9] (27%), Harikleia K et al [25] (28.57%) and Dursun N et al [37] (27%).

In conclusion, although the most common gall bladder histopathology diagnosis is chronic cholecystitis, the possibility of any incidental malignancy needs to be ruled out by mandatory routine histopathological examination of all cholecystectomy specimens. Secondly; most of the gallbladder carcinoma cases express CK7 by immunohistochemical examination.

## Acknowledgements

This research did not receive any specific grant from funding agencies in the public, commercial, or not-for-profit sectors.

## Conflict of Interest

The authors declare no conflict of interest.

## References

- Mehariya MK, Patel MB, Dhotre SV. Histopathological Study of gall bladder. *Int J Res Med.* 2014;3(4):96-9.
- Damodhar DNT, Chauhan DHM, Jadav DHR. Histological study of human gallbladder. *International Journal of Biomedical and Advance Research.* 2013 Oct 01;4(9):597. <https://doi.org/10.7439/ijbar.v4i9.461>
- Mohan H, Punia RPS, Dhawan SB, Ahal S, Sekhon MS. Original Article - Morphological spectrum of gallstone disease in 1100 cholecystectomies in North India. 2005 Dec 31.
- Srivastav AC, Srivastava M, Paswan R. Spectrum of clinicopathological presentations of gall bladder diseases in eastern UP. *International Journal of Contemporary Medicine Surgery and Radiology.* 2019;4(1):A18-A23.
- Strasberg SM. Clinical practice. Acute calculous cholecystitis. *The New England Journal of Medicine.* 2008 06 26;358(26):2804-2811. <https://doi.org/10.1056/NEJMcp0800929>
- Elwood DR. Cholecystitis. *The Surgical Clinics of North*

- America. 2008 Dec;88(6):1241-1252, viii. <https://doi.org/10.1016/j.suc.2008.07.008>
7. Singh P, et al. Histopathological spectrum of gall bladder lesions and association with cholelithiasis. *International Journal of Medical and Health Research*. 2018;4(9):134-8.
  8. Kumari NS, Sireesha A, Srujana S, Kumar OS. Cholecystectomies – A 1.5 year histopathological study. *IAIM*. 2016;3(9):134-39.
  9. Duval JV, Savas L, Banner BF. Expression of cytokeratins 7 and 20 in carcinomas of the extrahepatic biliary tract, pancreas, and gallbladder. *Archives of Pathology & Laboratory Medicine*. 2000 08;124(8):1196-1200. <https://doi.org/10.5858/2000-124-1196-EOCAIC>
  10. Owen DA, Kelly JK. Pathology of the gallbladder, biliary tract, and pancreas. In LiVolsi VA, ed. *Major Problems in Pathology*. Philadelphia: WB Saunders. 2001;39:221-32.
  11. Adsay NV, Bageci P, Tajiri T, Oliva I, Ohike N, Balci S, Gonzalez RS, et al. Pathologic staging of pancreatic, ampullary, biliary, and gallbladder cancers: pitfalls and practical limitations of the current AJCC/UICC TNM staging system and opportunities for improvement. *Seminars in Diagnostic Pathology*. 2012 08;29(3):127-141. <https://doi.org/10.1053/j.semmp.2012.08.010>
  12. Halpert B. Morphological studies on the gallbladder. II. The “true Luschka ducts” and the “Rokitansky-Aschoff sinuses” of the human gallbladder. *Bull Johns Hopkins Hosp*. 1927;41:77-103.
  13. Chu P, Wu E, Weiss LM. Cytokeratin 7 and cytokeratin 20 expression in epithelial neoplasms: a survey of 435 cases. *Modern Pathology: An Official Journal of the United States and Canadian Academy of Pathology, Inc*. 2000 09;13(9):962-972. <https://doi.org/10.1038/modpathol.3880175>
  14. McCluggage WG, Young RH. Immunohistochemistry as a diagnostic aid in the evaluation of ovarian tumors. *Seminars in Diagnostic Pathology*. 2005 02;22(1):3-32. <https://doi.org/10.1053/j.semmp.2005.11.002>
  15. Saad RS, Silverman JF, Khalifa MA, Rowsell C. CDX2, cytokeratins 7 and 20 immunoreactivity in rectal adenocarcinoma. *Applied immunohistochemistry & molecular morphology: AIMM*. 2009 05;17(3):196-201. <https://doi.org/10.1097/PAI.0b013e31819268f2>
  16. Al-Zahrani IH. The value of immunohistochemical expression of TTF-1, CK7 and CK20 in the diagnosis of primary and secondary lung carcinomas. *Saudi Medical Journal*. 2008 07;29(7):957-961.
  17. Rao JC, Adsay NV, Arola J, Tsui WM, Zen Y. Carcinoma of gall bladder. In: Cree IA, editor. *WHO classification of Tumours of the digestive system 5th ed*. Lyon: IARC. 2019:283-88.
  18. Devi B, et al. Histopathological Spectrum of Diseases in Gallbladder. *National Journal of Laboratory Medicine*. 2017;6(4):PO06-PO09.
  19. Mondal B, Maulik D, Biswas BK, Sarkar GN, Ghosh D. Histopathological spectrum of gallstone disease from cholecystectomy specimen in rural areas of West Bengal, India- an approach of association between gallstone disease and gallbladder carcinoma. *International Journal Of Community Medicine And Public Health*. 2016 Dec 22;3(11):3229-3235. <https://doi.org/10.18203/2394-6040.ijcmph20163941>
  20. Gupta K, Faiz A, Thakral R, Mohan A, Sharma V. The spectrum of histopathological lesions in Gallbladder in cholecystectomy specimens. *International Journal of Clinical and Diagnostic Pathology*. 2019 01 01;2:146-151. <https://doi.org/10.33545/pathol.2019.v2.i1c.22>
  21. Islam M, Akter S, Talukder A, Haque M. Role of Routine Histopathology of Gallbladder Specimen from Gallstone Disease to Detect Unsuspected Carcinoma. *Journal of Bangladesh College of Physicians and Surgeons*. 2019 09 30;37:186-190. <https://doi.org/10.3329/jbcps.v37i4.43348>
  22. Shah B, Deglookar S. A retrospective audit of gall bladder histopathology following cholecystectomy. *IP Journal of Diagnostic Pathology and Oncology*. 2020 Dec 15;3(2):123-126.
  23. Bhattacharjee PK, Nanda D. Prospective observational study on cholelithiasis in patients with carcinoma gall bladder in a tertiary referral hospital of Eastern India. *Journal of Cancer Research and Therapeutics*. 2019;15(1):153-156. [https://doi.org/10.4103/jcrt.JCRT\\_939\\_17](https://doi.org/10.4103/jcrt.JCRT_939_17)
  24. Dutta U, Saikia P, Gogoi G, Borgohain M. Clinicopathological evaluation of gallbladder carcinoma with special emphasis on incidentally detected cases- A hospital based study. *Indian Journal of Pathology and Oncology*. 2019 06 28;6:309-314. <https://doi.org/10.18231/j.ijpo.2019.057>
  25. Kalekou H, Miliaras D. Cytokeratin 7 and 20 expression in gallbladder carcinoma. *Polish Journal of Pathology: Official Journal of the Polish Society of Pathologists*. 2011;62(1):25-30.
  26. Hamdani NH, Qadri SK, Aggarwalla R, Bhartia VK, Chaudhuri S, Debakshi S, Baig SJ, Pal NK. Clinicopathological study of gall bladder carcinoma with special reference to gallstones: our 8-year experience from eastern India. *Asian Pacific journal of cancer prevention: APJCP*. 2012;13(11):5613-5617. <https://doi.org/10.7314/apjcp.2012.13.11.5613>
  27. Geramizadeh B, Kashkoe A. Incidental Gall Bladder Adenocarcinoma in Cholecystectomy Specimens; A Single Center Experience and Review of the Literature. *Middle East Journal of Digestive Diseases*. 2018 Oct;10(4):249-253. <https://doi.org/10.15171/mejdd.2018.118>
  28. Kumbhakar D. A Histopathological Study of Cholecystectomy Specimens. *Journal of Medical Science And clinical Research*. 2016 07 01;. <https://doi.org/10.18535/jmscr/v4i7.10>
  29. Tiwari A, Rai R, Jain SK. Importance of Routine Histopathological Examination of Gallbladder Specimen in Detecting Incidental Malignancies. *J Lumbini Med Coll*. 2016;4(1):15-9.
  30. Kumar H, Kini H, Tiwari A. Histological evaluation of 400 cholecystectomy specimens. *Journal of Pathology of Nepal*. 2015;5:834-40.
  31. Yadav R, Sagar M, Kumar S, Maurya SK. Incidental Gallbladder Carcinoma in North Indian Population: Importance of Routine Histopathological Examination of All Benign Gallbladder Specimens. *Cureus*. 2021 07;13(7):e16156. <https://doi.org/10.7759/cureus.16156>
  32. Sujata J, S R, Sabina K, Mj H, Jairajpuri ZS. Incidental gall bladder carcinoma in laparoscopic cholecystectomy: a report of 6 cases and a review of the literature. *Journal of clinical and diagnostic research: JCDR*. 2013 01;7(1):85-88. <https://doi.org/10.7860/JCDR/2012/5001.2677>
  33. Giang TH, Ngoc TT, Hassell LA. Carcinoma involving the gallbladder: a retrospective review of 23 cases - pitfalls in diagnosis of gallbladder carcinoma. *Diagnostic Pathology*. 2012 01 27;7:10. <https://doi.org/10.1186/1746-1596-7-10>
  34. Stancu M, Căruntu ID, Giușcă S, Dobrescu G. Hyperplasia, metaplasia, dysplasia and neoplasia lesions in chronic cholecystitis - a morphologic study. *Romanian Journal of Morphology and Embryology = Revue Roumaine De Morphologie Et Embryologie*. 2007;48(4):335-342.
  35. Siddiqui FG, Memon AA, Abro AH, Sasoli NA, Ahmad L. Routine histopathology of gallbladder after elective

cholecystectomy for gallstones: waste of resources or a justified act?. *BMC surgery*. 2013 07 08;13:26. <https://doi.org/10.1186/1471-2482-13-26>

36. Kocaöz S, Turan G. Preneoplastic and neoplastic gallbladder lesions detected after cholecystectomy. *Przegląd Gastroenterologiczny*. 2019;14(3):193-197. <https://doi.org/10.5114/pg.2019.82675>
37. Dursun N, Escalona OT, Roa JC, Basturk O, Bagci P, Cakir A, Cheng J, Sarmiento J, Losada H, Kong SY, Ducato L, Goodman M, Adsay NV. Mucinous carcinomas of the gallbladder: clinicopathologic analysis of 15 cases identified in 606 carcinomas. *Archives of Pathology & Laboratory Medicine*. 2012 Nov;136(11):1347-1358. <https://doi.org/10.5858/arpa.2011-0447-OA>



This work is licensed under a Creative Commons Attribution-Non Commercial 4.0 International License.