

Prognostic Significance of Double-Expresser Status in Diffuse Large B-cell lymphoma: Experience from a Tertiary Care Cancer Centre in India

Smrthi Vijay¹, Jayasudha Arundhathi Vasudevan¹, Rekha Appukuttan Nair¹, Geetha Narayanan², Jagathnath Krishna K.M.³, Priya Mary Jacob¹

¹Division of Pathology, Regional Cancer Centre, Thiruvananthapuram, Kerala, India. ²Division of Medical Oncology, Regional Cancer Centre, Thiruvananthapuram, Kerala, India. ³Division of Cancer Epidemiology and Biostatistics, Regional Cancer Centre, Thiruvananthapuram, Kerala, India.

Abstract

Background: Diffuse large B-cell lymphoma (DLBCL) is a neoplasm of medium or large B lymphoid cells with a diffuse histopathologic growth pattern. Co-expression of MYC and BCL2 proteins in DLBCL by immunohistochemistry (IHC) is referred to as the double-expresser (DE) phenotype and is associated with inferior survival. Objectives of this study were to assess the DE status in DLBCL and to assess its utility in predicting the prognosis in DLBCL. **Methods:** This was a retrospective study conducted in a tertiary care cancer centre. Study population included all the cases of DLBCL, NOS diagnosed in the centre in 2012. MYC and BCL2 protein expression were analysed by immunohistochemistry. The prognostic significance of double-expressers and non-double expressers using appropriate statistical methods. All the data were analysed using SPSS 11 software. Kaplan-Meier method was used to estimate the survival probability. A significant difference in survival between various prognostic factors was tested using the log-rank test. Prognostic factors were assessed using univariate and multivariate Cox-regression model. A P- value < 0.05 was considered to be statistically significant. **Results:** Double-Expresser lymphoma (DEL) constituted 22.2% (n=18) of all cases of DLBCL, NOS. DE status was associated with shorter PFS (P-value = 0.049) and OS (P-value = 0.015). **Conclusion:** DE status is associated with poor prognosis in DLBCL, NOS. Assessment of MYC and BCL2 by IHC represents a rapid and inexpensive approach to risk-stratify patients with DLBCL at the time of diagnosis.

Keywords: Double-Expresser lymphoma, frequency, Diffuse large B- cell lymphoma, progression- free survival

Asian Pac J Cancer Care, 9 (2), 247-257

Submission Date: 12/19/2023

Acceptance Date: 02/14/2024

Introduction

Diffuse large B-cell lymphoma (DLBCL) is the most common type of non-Hodgkin lymphoma (NHL). They are heterogeneous group of tumours with diverse clinical and biological behaviour and are subdivided into morphological variants, molecular subtypes, and distinct disease entities based on morphology, cell of origin, immunophenotype, and genetic profile [1, 2].

DLBCL with MYC and BCL-2 protein co-expression by immunohistochemistry are categorized as double-expresser lymphomas (DEL). The co-expression of MYC and BCL2

proteins should be considered a prognostic biomarker of poor clinical outcome. Co- expression of these proteins is predictive of poor prognosis at diagnosis and relapse. DEL comes under DLBCL not otherwise specified (DLBCL-NOS) category in the 2017 revised 4th edition WHO classification of Tumours of haematopoietic and lymphoid tissues. In DEL, two-thirds of patients belong to the activated B- cell (ABC) subtype and one-third belong to germinal centre B- cell (GCB) subtype [1, 3]. The prognostic and predictive factors

Corresponding Author:

Dr. Jayasudha Arundhathi Vasudevan

Associate Professor, Division of Pathology, Regional Cancer Centre, Thiruvananthapuram- 695011, Kerala, India.

Email: drjayasiv@gmail.com

described in DLBCL include specific clinical features, morphology, immunophenotype, proliferation index, genetic factors, tumour microenvironment, microRNA expression patterns host genetics, and treatment regimens explaining the variable clinical outcome [3-6]. Objectives of this study were to assess the double-expression status in DLBCL and to assess the utility of double-expression status in predicting the prognosis in patients of DLBCL by measuring the progression free survival (PFS) and overall survival (OS).

Materials and Methods

This was a retrospective study conducted in a tertiary care cancer centre. Study population included all the cases of DLBCL, NOS diagnosed in 2012. Study was approved by IRB and ethical committee (HEC No. 19/2019). Inclusion criteria for the study was defined as cases of DLBCL, NOS diagnosed in the cancer centre in 2012. Exclusion criteria was defined as cases of DLBCL, NOS, slides and blocks of which could not be retrieved from the archives, cases with inadequate tissue and cases diagnosed in the cancer centre by histopathology but complete lymphoma workup, staging and treatment were done in another centre. The sample size was estimated based on the study by Riedell PA et al and the estimated minimum sample required for the present study was 81 [7, 8]. Of the 184 cases diagnosed in 2012 and included according to the inclusion criteria, we excluded 44 cases as per the exclusion criteria. From the remaining cases, 81 were selected for this study by computer-generated random sampling. The slides and blocks of selected cases were retrieved and reviewed. MYC and BCL2 expressions were analysed by immunohistochemistry (IHC). The details of cases selected for the study were collected using a proforma. Details collected include registration number, biopsy number, age, sex, Ann Arbor stage, date of diagnosis, LDH score, ECOG performance status, extra nodal disease status, bone marrow involvement, progression status, recurrence status, follow-up dates and the date of death if the patient had expired. The prognostic significance of double-expressers was analysed by comparing progression-free survival (PFS) and overall survival (OS) of double-expressers and non-double expressers using appropriate statistical methods. PFS was taken from the date of diagnosis to the date of event (progression/recurrence/death) or date of last follow-up. OS was taken from the date of diagnosis to the date of death or date of last follow-up. In order to reduce the number of lost to follow-up cases, we attempted to contact the patients through phone, and data were collected. IHC was done on additional tissue sections taken from the retrieved blocks. Two separate sections were taken for c-MYC and BCL2. Anti-bcl-2 (SP66 clone) Rabbit Monoclonal Primary Antibody is directed against human bcl-2 expressed by B-cells of the mantle zone and interfollicular T-cells. This antibody exhibits a cytoplasmic staining pattern. The c-MYC (EP121) Rabbit Monoclonal Primary Antibody is directed against oncogene-encoded protein c-MYC. This antibody exhibits a nuclear staining pattern. Both the

antibodies are intended for qualitative staining in sections of formalin-fixed, paraffin-embedded tissues. IHC staining was done by automation in VENTANA Bench Mark XT. BCL2 expression was considered positive when $\geq 50\%$ of tumour cells were positive and c-MYC was considered positive when $\geq 40\%$ of tumour cells were positive [1]. Data collection was done by retrieving the case sheets of the 81 cases. The details of the cases selected for the study were entered into the proforma for analysis. The follow-up details were accessed from case records or by directly enquiring via phone. All data were analysed using SPSS 11 software. Continuous variables were represented by the mean and standard deviation. Categorical variables were expressed using frequency and relative proportion. The associations between two categorical variables were assessed using Chi-square test/ Fisher's Exact Test. Kaplan-Meier method was used to estimate the survival probability. A significant difference in survival between various prognostic factors was tested using the log-rank test. Prognostic factors were assessed using univariate and multivariate Cox-regression model. A P-value < 0.05 was considered to be statistically significant. Measures were also taken to eliminate bias. Selection bias was avoided by selecting cases by computer generated random numbers. The pathologist was made unaware of the outcome while assessing the double-expresser status to exclude observer bias.

Results

In the study group, 22.2% (n = 18) were DEL. Comparison of clinical, laboratory parameters and survival of DEL and Non-DEL is shown in Table 1. Age of the patients in the study group ranged from 15 to 86 yrs. Median age of the DEL was 58 years. In the study, male to female ratio was 1.45:1. Males were predominantly affected in both DEL and Non-DEL. Advanced stage disease was present in 88.8% of DEL and 65.1% of Non-DEL. CNS involvement was seen in 6.3% (n=4) of non-DEL and was absent in DEL. Bone Marrow involvement was seen in 9.5% (n=6) of non-DEL and 16.7% (n=3) of DEL. Most common morphological variant in both DEL and

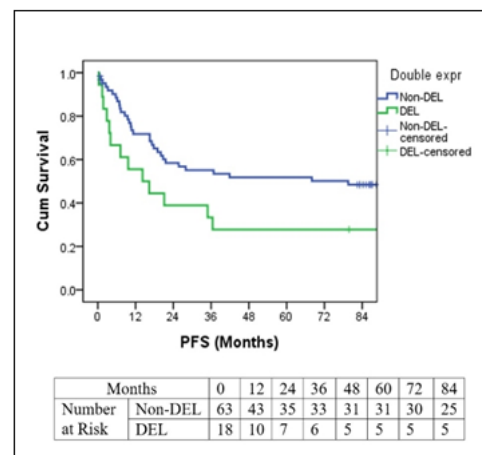


Figure 1. Comparison of Progression Free Survival in DEL and Non-DEL

Table 1. Comparison of Clinical, Laboratory Parameters and Survival of DEL and Non-DEL

	Non-DEL	DEL	P-value
Age (> 60years) n (%)	18 (28.60 %)	8 (44.40 %)	0.255
Male female ratio	1.52	1.25	0.789
CNS involvement	4 (6.30 %)	nil	0.57
Bone marrow involvement n (%)	69 (9.50 %)	3 (16.70 %)	0.408
LDH mean	1031.2	1667.4	0.099
Advanced Stage n (%)	41 (65.10 %)	16 (88.90 %)	0.051
High-intermediate and High IPI score n (%)	17 (27.00 %)	10 (55.60 %)	0.045
Progression-free Survival Probability 5 years (%)	51.8% (SE= 6.5%)	27.8% (SE= 10.6%)	0.049
Progression-free Survival Probability 7 years (%)	48.4% (SE=6.5%)	27.80% (SE=10.6%)	0.049
Overall survival probability 5 years (%)	65.8% (SE=6.2%)	33.3% (SE=11.1%)	0.015
Overall survival probability 7 years (%)	55.4% (SE=6.5%)	27.8% (SE=10.6%)	0.015

Table 2. Univariate Analysis of Progression Free Survival

Variables	P-value	HR	95.0% CI for HR	
			Lower	Upper
Age (>60 vs ≤ 60)	0.051	1.831	0.996	3.365
Sex (Female vs Male)	0.97	1.012	0.557	1.838
Double-expresser (DEL vs Non-DEL)	0.053	1.896	0.991	3.629
Stage (III & IV vs I & II)	0	5.336	2.094	13.597
Bone marrow (Involved vs Not Involved)	0.952	0.972	0.383	2.467
CNS (Involved vs Not Involved)	0.258	1.815	0.646	5.098
Morphology (Centro blast vs Immuno blast)	0.507	0.617	0.148	2.566
Morphology (anaplastic vs Immunoblast)	0.992	1.012	0.091	11.207
IPI (Poor vs good)	0.136	1.588	0.865	2.917

Non-DEL group was centroblastic variant. The mean LDH value was higher in DE than in non-DE, but was not statistically significant. In this study, DE predominantly presented with high – intermediate and high IPI score (n=10, 55.6%) whereas non-DEL predominantly presented with low and low- intermediate score (n=46, 73%) and this difference was found to be statistically significant (P-value = 0.045). Median follow-up period was 92 months. The 5- year PFS was 46.2% (SE=5.6%) and 7- year PFS was 43.7% (SE= 5.6%). PFS was less in DEL group when compared to Non-DEL and was found to be statistically significant (P- value 0.049) (Figure 1). The 5- year OS was 58.2% (SE=5.6%) and 7- year OS was 49% (SE=5.7%). Overall survival was less in DEL group and was found to be statistically significant (P-value=0.015) (Figure 2). Univariate analysis indicated that stage is a significant independent prognostic factor for PFS (Table 2). Age and DE status were found to be marginally significant. Univariate analysis done for OS indicated that age, stage, IPI and DE status were significant independent prognostic factors (Table 3). Multivariate Cox regression was done with significant covariates obtained in univariate analysis, however only stage turned out to be significant and hence multivariate analysis does not exist.

Discussion

In the present study, the frequency and prognostic significance of DE status in DLBCL, NOS were analyzed. The frequency of DEL in DLBCL, NOS in this study was 22.2% (n=18). The difference in frequency values in published literature may possibly be due to different cut-off values for c-MYC and BCL-2 positivity, different antibody clones and difference in study population selection. The frequency of DEL in our study is almost similar to that mentioned in most other studies [9-12]. Kawashima et al showed a much greater frequency as compared to others because their population was composed exclusively of patients with de novo DLBCL or DLBCL transformed from follicular lymphoma, who underwent allogeneic haematopoietic stem cell transplantation [13]. In this study median age of study group was 53 years, and the median age among double-expressers was 58years. The median age of DEL in the study is almost similar to that mentioned in other studies [13, 14]. In this study majority of the cases were males as seen in other similar studies. There is a slight male predominance in both DLBCL, NOS and DEL. In this study, 55.60% of DEL had high-intermediate-/high risk IPI score, whereas only 27.7% of Non-DEL belonged to high-intermediate/high-risk group. This was found to be statistically significant. From the results of this study as well as the other studies, it can be seen that most of the DEL cases have a high-intermediate/high IPI score

Table 3. Univariate Analysis of Overall Survival

	P- value	Hazard rate (HR)	95% CI for HR	
			Lower	Upper
Age (>60 vs ≤ 60)	0.015	2.171	1.164	4.052
Sex (Female vs Male)	0.77	1.096	0.593	2.027
Double-expresser (DEL vs Non- DEL)	0.018	2.226	1.149	4.311
Stage (III & IV vs I & II)	0.001	4.857	1.898	12.43
Bone marrow (Involved vs Not Involved)	0.875	1.078	0.423	2.748
CNS (Involved vs Not Involved)	0.21	1.939	0.688	5.464
Morphology (Centro blast vs Immuno blast)	0.373	0.523	0.125	2.181
IPI (Poor vs good)	0.045	1.891	1.014	3.527

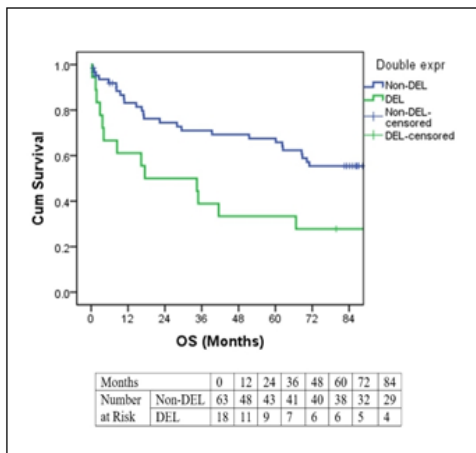


Figure 2. Comparison of Overall Survival in DEL and Non-DEL

[9, 15, 16]. In this study, mean LDH at diagnosis for all patients was higher in DEL as compared to Non-DEL but was not found to be statistically significant. Similar results can be seen in other studies also [9, 15]. DEL characteristically presents in advanced stage at the time of diagnosis [9, 10, 12]. In this study, out of the 18 cases of DEL, 88.9% of the cases presented at stage III or IV. The P- value was found to be 0.051. In this study, 88.9% of DEL had morphology of centroblastic variant, and 11.1% had morphology of immunoblastic variant. In a similar study, 60% had centroblastic variant morphology and 25% had immunoblastic variant morphology among DEL [9]. Centroblastic variant shows a predominance in both the studies. Immunoblastic variant was also predominantly seen in DEL in both these studies. In the study, 16.7% of the DEL showed bone marrow involvement as compared to 9.5% in Non- DEL, and was not statistically significant. The frequency of bone marrow involvement was similar to that mentioned in other studies [10, 12, 17]. In this study, the 5-year PFS for DEL was found to be 27.8% (SE= 10.6%) as compared to 51.8% (SE= 6.5%) for Non-DEL. Also, the 7-year PFS for DEL was found to be 27.8% (SE=10.6%) as compared to 48.4% (SE=6.5%) for Non-DEL. This was found to be statistically significant. Comparison of PFS in various studies revealed that PFS for DEL ranged from 20-32% [10, 12, 13]. In the above studies, PFS was shorter for DEL when compared to

Non-DEL and was found to be statistically significant. In this study, the 5-year OS for DEL was found to be 33.3% (SE=11.1%) as compared to 65.8% (SE=6.2%) for Non-DEL. Also, the 7-year OS for DEL was found to be 27.8% (SE=10.6%) as compared to 55.4% (SE=6.5%) for Non-DEL. This difference in OS was found to be statistically significant. Comparison of OS in various studies showed that OS for DEL ranged from 22-47% [9, 10, 12, 13, 16]. In the above studies, DEL showed inferior OS when compared to Non-DEL and was found to be statistically significant. Limitation of this study was that FISH analysis for MYC, BCL2 and BCL6 rearrangements to exclude DHL and THL cases were not done.

To conclude, the frequency of DEL in DLBCL, NOS is 22.2%. DEL presented more often in advanced stage and showed higher LDH values and high- intermediate/high risk IPI score. Difference in IPI score between DEL and Non- DEL was statistically significant. DEL showed significantly inferior OS and PFS when compared to Non- DEL. Double-expresser status is associated with poor prognosis in DLBCL, NOS. Assessment of MYC and BCL2 expression by IHC represents a rapid and inexpensive approach to risk-stratify patients with DLBCL at the time of diagnosis.

References

1. Swerdlow SH, Campo E, Harris NL, Jaffe ES, Pileri SA, Stein H, et al. eds. WHO Classification of Tumours of Haematopoietic and Lymphoid Tissues. Revised 4th ed. Lyon, France: International Agency for Research on Cancer. 2017:p. 291-297.
2. Adam P, Katzenberger T, Seeberger H, Gattenlöhner S, Wolf J, Steinlein C, Schmid M, et al. A case of a diffuse large B-cell lymphoma of plasmablastic type associated with the t(2;5) (p23;q35) chromosome translocation. The American Journal of Surgical Pathology. 2003 Nov;27(11):1473-1476. <https://doi.org/10.1097/00000478-200311000-00012>
3. Sesques P, Johnson NA. Approach to the diagnosis and treatment of high-grade B-cell lymphomas with MYC and BCL2 and/or BCL6 rearrangements. Blood. 2017 01 19;129(3):280-288. <https://doi.org/10.1182/blood-2016-02-636316>
4. Sarkozy C, Traverse-Glehen A, Coiffier B. Double-hit and double-protein-expression lymphomas: aggressive

- and refractory lymphomas. *The Lancet. Oncology*. 2015 Nov;16(15):e555-e567. [https://doi.org/10.1016/S1470-2045\(15\)00005-4](https://doi.org/10.1016/S1470-2045(15)00005-4)
5. Rekhman N, Bishop JA. Quick reference handbook for surgical pathologists. Berlin Heidelberg: springer; 2011 Aug 27:46-51...
 6. Cox MC, Nofroni I, Ruco L, Amodeo R, Ferrari A, La Verde G, Cardelli P, et al. Low absolute lymphocyte count is a poor prognostic factor in diffuse-large-B-cell-lymphoma. *Leukemia & Lymphoma*. 2008 09;49(9):1745-1751. <https://doi.org/10.1080/10428190802226425>
 7. Riedell PA, Smith SM. Double hit and double expressors in lymphoma: Definition and treatment. *Cancer*. 2018 Dec 15;124(24):4622-4632. <https://doi.org/10.1002/cncr.31646>
 8. Naing L, Winn T, Rusli BN. Practical issues in calculating the sample size for prevalence studies. *Archives of orofacial Sciences*. 2006;1:9-14.
 9. Mehta A, Verma A, Gupta G, Tripathi R, Sharma A. Double Hit and Double Expresser Diffuse Large B Cell Lymphoma Subtypes: Discrete Subtypes and Major Predictors of Overall Survival. *Indian Journal of Hematology & Blood Transfusion: An Official Journal of Indian Society of Hematology and Blood Transfusion*. 2020 Oct;36(4):627-634. <https://doi.org/10.1007/s12288-019-01248-w>
 10. Hu S, Xu-Monette ZY, Tzankov A, Green T, Wu L, Balasubramanyam A, Liu W, et al. MYC/BCL2 protein coexpression contributes to the inferior survival of activated B-cell subtype of diffuse large B-cell lymphoma and demonstrates high-risk gene expression signatures: a report from The International DLBCL Rituximab-CHOP Consortium Program. *Blood*. 2013 05 16;121(20):4021-4031; quiz 4250. <https://doi.org/10.1182/blood-2012-10-460063>
 11. Naseem M, Asif M, Khadim MT, Ud-Din H, Jamal S, Shoaib I. The Frequency of Double Expresser in Selected Cases of High Grade Diffuse Large B-Cell Lymphomas. *Asian Pacific journal of cancer prevention: APJCP*. 2020 04 01;21(4):1103-1107. <https://doi.org/10.31557/APJCP.2020.21.4.1103>
 12. Johnson NA, Slack GW, Savage KJ, Connors JM, Ben-Neriah S, Rogic S, Scott DW, et al. Concurrent expression of MYC and BCL2 in diffuse large B-cell lymphoma treated with rituximab plus cyclophosphamide, doxorubicin, vincristine, and prednisone. *Journal of Clinical Oncology: Official Journal of the American Society of Clinical Oncology*. 2012 Oct 01;30(28):3452-3459. <https://doi.org/10.1200/JCO.2011.41.0985>
 13. Kawashima I, Inamoto Y, Maeshima AM, Nomoto J, Tajima K, Honda T, Shichijo T, et al. Double-Expressor Lymphoma Is Associated with Poor Outcomes after Allogeneic Hematopoietic Cell Transplantation. *Biology of Blood and Marrow Transplantation: Journal of the American Society for Blood and Marrow Transplantation*. 2018 02;24(2):294-300. <https://doi.org/10.1016/j.bbmt.2017.10.013>
 14. Huang S, Nong L, Wang W, Liang L, Zheng Y, Liu J, Li D, Li X, Zhang B, Li T. Prognostic impact of diffuse large B-cell lymphoma with extra copies of MYC, BCL2 and/or BCL6: comparison with double/triple hit lymphoma and double expressor lymphoma. *Diagnostic Pathology*. 2019 07 17;14(1):81. <https://doi.org/10.1186/s13000-019-0856-7>
 15. Aggarwal A, Rafei H, Alakeel F, Finianos AN, Liu ML, El-Bahesh E, et al. Outcome of patients with double-expressor lymphomas (DELs) treated with R-CHOP or R-EPOCH. *Blood*. 2016;128(22):5396
 16. Peña C, Villegas P, Cabrera ME. Double or triple-expressor lymphomas: prognostic impact of immunohistochemistry in patients with diffuse large B-cell lymphoma. *Hematology, Transfusion and Cell Therapy*. 2020 06;42(2):192. <https://doi.org/10.1016/j.htct.2019.04.002>
 17. Green TM, Young KH, Visco C, Xu-Monette ZY, Orazi A, Go RS, Nielsen O, Gadeberg OV, Mourits-Andersen T, Frederiksen M, Pedersen LM, Møller MB. Immunohistochemical double-hit score is a strong predictor of outcome in patients with diffuse large B-cell lymphoma treated with rituximab plus cyclophosphamide, doxorubicin, vincristine, and prednisone. *Journal of Clinical Oncology: Official Journal of the American Society of Clinical Oncology*. 2012 Oct 01;30(28):3460-3467. <https://doi.org/10.1200/JCO.2011.41.4342>



This work is licensed under a Creative Commons Attribution-Non Commercial 4.0 International License.