

# Real World Data of Response of Trastuzumab Based Chemotherapy in Locally Advanced HER2 Positive Breast Cancer from a Developing Country

Dinesh Chandra Doval<sup>1</sup>, Sneha Bothra<sup>1</sup>, Pankaj Goyal<sup>1</sup>, Chaturbhuj Agrawal<sup>1</sup>, Parveen Jain<sup>1</sup>, Rupal Tripathi<sup>2</sup>, Anurag Sharma<sup>2</sup>, Sunil Pasricha<sup>3</sup>, Kumardeep Dutta Choudhary<sup>1</sup>

<sup>1</sup>Department of Medical Oncology, Rajiv Gandhi Cancer Institute & Research Centre, Delhi, India. <sup>2</sup>Department of Research, Rajiv Gandhi Cancer Institute & Research Centre, Delhi, India. <sup>3</sup>Department of Pathology, Rajiv Gandhi Cancer Institute & Research Centre, Delhi, India.

## Abstract

**Background:** Data regarding pathologic response of Trastuzumab based chemotherapy in locally advanced HER2 positive breast cancer in neoadjuvant setting is scarce. **Methods:** A retrospective analysis was conducted from January 2014 to January 2019 at a tertiary cancer care centre in North India and 81 breast cancer patients who underwent neoadjuvant chemotherapy were included. The clinical and pathologic characteristics, response, toxicity and survival data was collected, collated and analyzed. **Results:** The most commonly observed tumor characteristics at baseline were clinical stage T4 (72.8%), nodal stage N2 (40.7%), invasive ductal carcinoma on histology (98.8%), grade 3 (66.7%) and hormone receptor negativity (54.3%). In terms of post treatment characteristics, a higher incidence of partial response (55.6%), post treatment tumor stage ypT0 (45.7%), nodal status ypN0 (54.3%), absence of extracapsular invasion (77.8%) and absence of pathologic complete response (pCR, 63%) were observed. pCR was attained in 30 patients and was most commonly associated with clinical tumor stage T4 (26/30), nodal stage N2-N3 (19/30), grade 3 (21/30) and hormone receptor negativity (20/30). Altogether, 19.75% had grade 3/4 adverse events. At 6 years, 86% v/s 61% patients were disease free (p=0.037) and 93% v/s 79% patients (p=0.181) were alive in the pCR and no pCR groups, respectively. **Conclusion:** Even in locally advanced breast cancer (LABC), Trastuzumab had good response in terms of pCR and survival outcomes. Thus, one can be encouraged to use this single HER2 blockade if dual blockade is not feasible in HER2 positive LABC in the neoadjuvant setting.

**Keywords:** Trastuzumab- Locally advanced breast cancer- HER2 positive- Survival- Developing country

*Asian Pac J Cancer Care*, 6 (4), 449-456

Submission Date: 08/16/2021    Acceptance Date: 10/10/2021

## Introduction

Breast cancer is the most common cancer in women, both in the developed and the developing countries [1]. Though breast cancer was thought to be a disease of the developed countries, its incidence has been gradually increasing in the developing countries (likely due to westernization and increasing life expectancy) [1]. Breast cancer is now the most common cancer in the Indian women, both rural and urban. In 2018, about 162,468 women were newly diagnosed with breast cancer and 87,090 women succumbed in India [2], indicating 50%

mortality. One of the main reasons for the high mortality is procuring medical help in advanced stages of the disease. They mainly present as locally advanced breast cancer (LABC) which accounts for up to 50% of all newly diagnosed cases of breast cancer [3], while these numbers are 5-15% in the developed countries [4]. Management of LABC is a clinical challenge in terms of offering appropriate oncological outcome and maintaining a good quality of life.

### Corresponding Author:

Dr. Dinesh Chandra Doval

Chair, Department of Medical Oncology, Rajiv Gandhi Cancer Institute & Research Centre, Sector-5, Rohini, Delhi, India.

Email: dcdoval@gmail.com

The presence or absence of residual invasive cancer [known as a pathological complete response (pCR)] after neoadjuvant chemotherapy (NACT) is a strong prognostic risk factor and surrogate endpoint for recurrence free survival, especially in Human Epidermal growth Receptor 2 (HER2) positive breast cancer [5]. The current preferred therapy for HER2 positive breast cancer in the neoadjuvant setting is chemotherapy with anti-HER2 targeted therapy, i.e. dual blockade with trastuzumab with pertuzumab/lapatinib or single blockade with trastuzumab alone. These recommendations are based on the higher rates of pCR with addition of HER2 targeted agents with chemotherapy and with evolving data, the preferred regimen now is dual anti HER2 therapy, which has further shown to increase pCR [6-11]. However, due to financial constraints, single-agent Trastuzumab is preferred as anti HER2 targeted therapy in neoadjuvant setting for breast cancer in a developing country like India. The present study was therefore conducted to evaluate the response of Trastuzumab based chemotherapy in locally advanced HER2 positive breast cancer in a single centre in a developing country.

## Materials and Methods

A retrospective observational study was conducted during the period January 2014 to June 2019 in the Department of Medical Oncology at a tertiary cancer care centre in North India. A total of 130 female patients in the age group of 18-65 years with Eastern Cooperative Oncology Group (ECOG) performance status of 0-1 having stage III HER2 positive LABC were screened for the study, of which, 81 patients who underwent neoadjuvant chemotherapy (NACT) were included in the detailed analysis. The consort diagram is presented in Figure 1. Only histologically confirmed cases of primary invasive carcinoma of the breast were included in the study. HER2-positivity was defined as IHC 3+ or FISH positivity in cases of IHC 2+. The present study was approved by the Institutional Review Board of Rajiv Gandhi Cancer Institute & Research Centre, Delhi, India (vide letter no. RGCIRC / IRB / 74 / 2017) and was given a waiver from the informed consenting process. The study was conducted as per the Helsinki Declaration.

The clinical and pathologic characteristics of all the patients were recorded. Related to the treatment details for LABC, the neo-adjuvant chemotherapy (NACT) consisted of 6 cycles of Trastuzumab based chemotherapy followed by response evaluation. Surgery was done after 6 cycles of chemotherapy depending on the clinical & radiological response. Trastuzumab was continued for total duration of one year (continued three weekly trastuzumab through post-operative and radiation therapy time). Doses and drugs used in trastuzumab based chemotherapy were (with growth factor support): Inj. Trastuzumab 8 mg/kg 1st dose, followed by 6mg/kg, Inj. Docetaxel: 75 mg/m<sup>2</sup>, Inj. Carboplatin as per AUC 5 (q 3 weekly) as per the BCIRG-006 (5). Response was assessed clinically during each visit and radiological response assessed using response evaluation criteria for solid tumors (RECIST

v1.0) at the end of 3 and 6 cycles, prior to surgery. Prior to starting chemotherapy titanium clips were placed within the tumor for future resectability. The pathologic response to chemotherapy was determined by analyzing the surgical tumor specimens. Most patients underwent axillary nodal dissection as they were node positive clinically. The residual tumor size and lymph node status were evaluated to assess the pathologic response to NACT. pCR was defined as no pathologic evidence of a residual invasive carcinoma in the breast or axillary lymph nodes (ypT0-isN0 status). Residual ductal carcinoma in situ (Tis) was included under pCR. Toxicity was assessed at every visit using the National Cancer Institute Common Toxicity Criteria version 4.0 [6].

### Statistical analysis

SPSS version 22 for Windows (SPSS Inc, Chicago IL, USA) was used for statistical analysis. The statistical comparisons for quantitative variables was done using unpaired t-test or Mann-Whitney 'U' test and for categorical variables, Chi-square or Fisher's exact test were used as per the nature of data. Survival analysis was performed using the Kaplan Meier method. Log Rank test was used to compare the difference in survival among the groups. A two sided p-value <0.05 was considered as significant.

## Results

A total of 81 patients receiving the TCH based chemotherapy were included in the study. Of these, 2 patients could not undergo surgery. The baseline and post treatment characteristics of the patients have been shown in Table 1. The median age of the patients was 52 years (range 26-75 years). Majority of the patients (60/81) were in the age group of 21-40 years. The most commonly observed baseline characteristics among the patients were age >50 years (56.8%), postmenopausal status (50.6%), clinical tumor stage T4 (72.8%), clinical nodal stage N2 (40.7%), invasive ductal carcinoma on histology (98.8%), grade 3 (66.7%) and hormone receptor negativity (54.3%). With respect to the post treatment characteristics, a higher incidence of partial response (55.6%), post treatment tumor stage ypT0 (45.7%), post treatment nodal status ypN0 (54.3%), absence of extracapsular invasion (77.8%) and absence of pathologic complete response (pCR, 63%) were observed.

Further, a correlation of the baseline characteristics with pathologic complete response was performed (Table 2). A pCR was attained in a total of 30 patients. Also, pCR in the patients was most commonly observed in the age >50 years (19/30), postmenopausal status (17/30), clinical tumor stage T4 (26/30), clinical nodal stage N2-N3 (19/30), grade 3 (21/30) and hormone receptor negativity (20/30). However, the results were not statistically significant.

In terms of adverse events, the chemotherapy regimen TCH was well tolerated in the study population. Growth factor support was used in all the patients. The major adverse events have been shown in Figure 2.

Table 1. Baseline and Post Treatment Characteristics

Characteristics	N
Age group	
<50 years/ >50 years	35/ 46
Menopausal status	
Premenopausal/ Postmenopausal	40/ 41
Clinical tumor stage	
cT1-T3/ cT4	22/ 59
Clinical nodal stage	
cN0/ cN1/ cN2/ cN3	1/ 31/ 33/ 16
TNM staging	
II/ III	4/77
Histology	
Invasive ductal carcinoma/ Others	80/ 1
Grade	
1/2/3	3/24/54
Estrogen receptor	
No/ Yes	45/ 36
Progesterone receptor	
No/ Yes	60/ 21
Hormone receptor	
Negative/ Positive	44/ 37
Clinical response	
Complete response/ Partial response/ Progressive disease	35/ 45/ 1
Post treatment tumor (ypT)	
ypT0/ ypT1/ ypT2/ ypT3/ ypT4	37/ 18/ 18/ 4/ 2/ 2
Post treatment nodes (ypN)	
ypN0/ ypN1/ ypN2/ ypN3/ No surgery	44/ 23/ 9/ 3/ 2
Extracapsular invasion	
No/ Yes/ No surgery	63/ 16/ 2
Pathologic complete response	
No/ Yes	51/ 30

Altogether, there were 16 patients (19.75%) with grade 3/4 adverse events. The most common adverse events were hematological. The most common grade 3/4 event requiring inpatient transfusion and supportive care

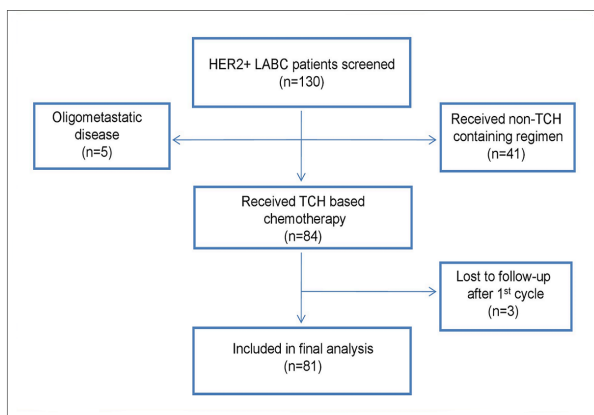


Figure 1. Consort Diagram

was thrombocytopenia in 9 patients (11%), but with no episodes of major bleeding. Despite the growth factor support, there were 4 patients with febrile neutropenia, with one patient requiring intensive care in view of septic shock. Uncomplicated grade 3/4 neutropenia was seen in 2 patients. Anemia was seen in 41 (50.61%) patients, with 3 patients with grade 3 or 4 event requiring blood transfusion support. Amongst the non-haematological adverse events, gastrointestinal (GI) adverse events were the most common. Three patients had grade 3 or 4 event and required inpatient supportive care. Hypersensitivity was seen during infusion of Trastuzumab in 2.5% patients which was managed with anti-histamines and steroids without dose modification or discontinuation. There were no grade 3 or 4 infusional reactions. Cardiotoxicity was one of the most fatal adverse event but was seen in 1 patient with underlying coronary artery disease, who had asymptomatic, reversible fall in left ventricular ejection fraction, which recovered without any therapy. There were no grade 3 or 4 events of cardiotoxicity seen in the present study. Among all the patients, 8 (9.9%) patients had delay

Table 2. Correlation of Baseline Characteristics with Pathologic Complete Response

Characteristics	N	Pathologic complete response		p-value
		No n=51	Yes n=30	
Age group				0.486
<50 years	35	24	11	
>50 years	46	27	19	
Menopausal status				0.646
Premenopausal	39	26	13	
Postmenopausal	42	25	17	
Clinical tumor stage				0.603
cT1-T3	22	11	11	
cT4	59	33	26	
Clinical nodal stage				0.815
cN0-N1	32	21	11	
cN2-N3	49	30	19	
Grade				0.808
1-2	27	18	9	
3	54	33	21	
Estrogen receptor				0.064
No	45	24	21	
Yes	36	27	9	
Progesterone receptor				0.192
No	60	35	25	
Yes	21	16	5	
Her2 neu				0.738
2+	11	8	3	
3+	70	43	27	
Hormone receptor				0.109
Negative	44	24	20	
Positive	37	27	10	

in chemotherapy dosing with median delay of 3 days due to adverse events. A total of 24 (29.6%) patients had nail changes (discolouration) during therapy which reversed after the completion of therapy. Alopecia was seen in all the patients which reversed after the completion of chemotherapy.

Survival was analyzed for all the patients. At 6 years, 86% v/s 61% patients were disease free ( $p=0.037$ ) and

93% v/s 79% patients ( $p=0.181$ ) were alive in the pCR and no pCR groups, respectively (Figure 3).

## Discussion

LABC is a major problem in our country with ignorance and late consultations with healthcare. The knowledge about the hormone receptors has brought to light the importance of the key signaling pathways as the dominant drivers of cell proliferation and survival in the majority of breast cancers. HER2 positive breast cancers are aggressive tumors and early tumor control with neoadjuvant chemotherapy helps abate the poor prognosis associated with HER2 positivity [12-13]. There is a paucity of data in HER2 positive breast cancer pertaining to neoadjuvant chemotherapy regimens. The data on Trastuzumab based neoadjuvant regimens are limited and more so in the Asian population.

In the present study, the efficacy and toxicity profile of non-anthracycline Trastuzumab based chemotherapy in the neo-adjuvant setting was recorded in stage II/III (LABC/EBC) HER2+ breast cancer. Out of 81 patients

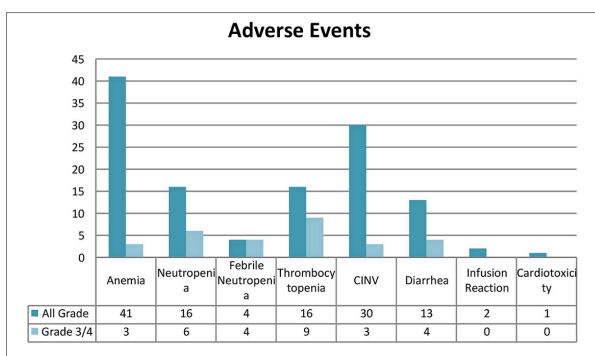


Figure 2. Adverse Events

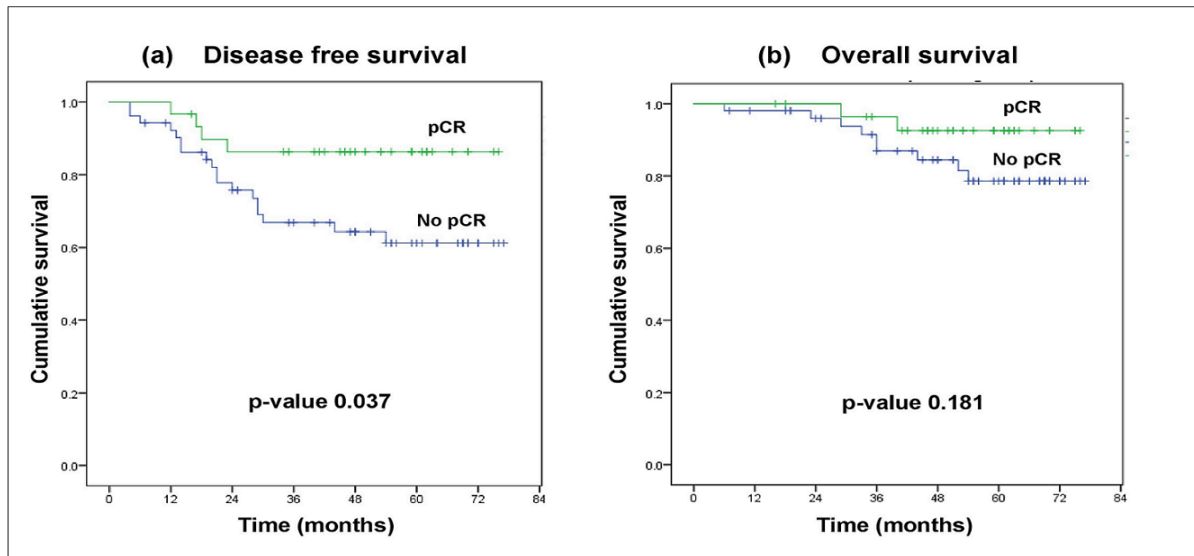


Figure 3. Survival Analysis

analyzed, 59 (72.8%) patients had tumors either infiltrating the skin or chest wall or both (T4). Nodal positivity was clinically present in more than 90% patients and of these, 60% had N2-/N3 nodal status. In this study, there were more advanced stage tumors as compared to the previous similar studies by Buzdar et al and NOAH trial [14] where there were majority of patients with early breast cancer which could partially explain the comparatively slightly lower pCR rate in this study.

There has been a debate about whether anthracyclines be used concomitantly with trastuzumab or not. Various trials in adjuvant setting have shown that non-anthracycline based chemotherapy regimen is doing as good [15], if not better in the adjuvant setting. Recently there has been data on non-anthracycline based chemotherapy in neoadjuvant setting as well but with dual HER2 blockade [5,7,8].

In terms of response, the clinical response rate in our study was comparatively lower to clinical complete response rates of 87% observed by Buzdar et al [16-17]. This difference again could be due to higher proportion of T4 tumors in our study as compared to these studies, which had fewer patients with T4 disease or N2-N3 nodal status. In patients with clinical complete response, 30/35 (87.5%) patients had pCR thereby demonstrating a good concordance between response assessment by

MRI/PET-CT after neo-adjuvant chemotherapy and pCR in surgical specimen. Similar concordance has been seen in NOAH trial where out of 87% clinical responses, 81% patients achieved pCR [14].

pCR has been shown to correlate with long term outcome measures such as DFS and OS and hence taken as surrogate marker to evaluate the long term outcome of any chemotherapy regimen. pCR rate in our study was 37.0% and it is comparable to most previous trials using neoadjuvant chemotherapy with Trastuzumab, although the chemo regimens used in those studies are varied. In the largest NOAH trial [14], the pCR rates were 38% similar to our study although in that trial almost doubling of pCR was reported in comparison to non-Trastuzumab containing chemo-regimen. In the Gepar Quattro trial, (EC followed by docetaxel with or without capecitabine in combination with or without trastuzumab), pCR rates were 40% which were not significantly different with different chemotherapeutic regimes [18]. Some smaller studies have reported lower pCR rate of 26% like by Pierga et al [19], while some reported very high pCR rate upto 67% like in study by Buzdar et al [16-17]. In our study pCR rate was comparable to above mentioned studies despite of fact that three quarter patients in this study being advanced T4 tumors and we used non-anthracyclines based chemo

Table 3. Comparative Analysis of the Pathologic Response Rates in Different Studies

Study	Chemotherapy regimen	pCR rates (%)
GeparQuattro [18]	EC → T±X±H	31.70
TECHNO Trial [32]	EC → TH	39
NOAH [14]	Varied	38
Tiwari et al [33]	TCH	36.30
NeoSphere [21]	TH+ P	45.80
TRYPAHENA [22]	TCH+P	66.10
Bayraktar et al [34]	TCH	36.30
NeoALTTO [35]	Paclitaxel+H+L	51.30
Present study	TCH	37



regimen. A longer follow up period is necessary to demonstrate this pCR turning into DFS or OS advantage.

An important factor that predicts pCR is the number of anti-HER2 agent that is used [20-22] (Table 3). From not using any anti Her2 agent to using dual blockade, the pathological complete response increases. In this study, various biological, clinico-pathologic and treatment related factors were evaluated which were expected to predict pCR. Higher grade (III) predicted clinical complete response as well as pCR similar to previously published studies [23-26]. Hormone positivity was seen in 45% patients in this study and ER and PR negative tumors are also associated with higher pCR rates (not statistically significant) as observed in our study and previously published studies [23-29].

The regimen was well tolerated with few adverse events recorded in the present study which were mainly hematological and gastrointestinal. There were 16 patients (19.8%) with grade 3/4 adverse events. Most of these adverse events resolved with few admissions for supportive care. There were 8 patients with dose delay and/or modification due to these adverse events. The adverse events in present study were higher as compared to previous studies [14,30]. Kolberg et al reported no grade 3/4 adverse events with no dose delays or modifications [30]. Comparatively higher adverse events in this study may be attributed to poor baseline nutritional status of Indian patients. Based upon concerns regarding cardiotoxicity, anthracycline-free chemotherapy backbones for trastuzumab have been explored in the adjuvant and in the neoadjuvant setting. The data on efficacy of the non-anthracyclines Trastuzumab containing regimen is limited. Kolberg et al., presented a study of operable HER2 positive breast cancers with TCH regimen in NACT and observed a pCR of 64% in a cohort treated with TCH, the regimen used in the BCIRG-006 trial in the adjuvant setting [31]. Variable pCR rates have been observed in the different studies [32-35].

This study has one of the longest follow up with TCH based chemotherapy in neoadjuvant setting in locally advanced HER2 positive breast cancer. pCR has been shown to correlate with long term outcome measures such as DFS and OS and hence taken as surrogate marker to evaluate long term outcome of any chemotherapy regimen. Thus, regardless of the fact that anthracycline was not used in the chemotherapy backbone, the regimen was well tolerated with good oncological outcome in terms of the response and survival outcomes.

Even in LABC, TCH had good response in terms of pCR and survival outcomes comparable with adjuvant trials. Thus, one can be encouraged to use TCH based chemotherapy in Her2 positive breast cancers in neoadjuvant setting. With the advent of dual HER2 blockade, single HER2 blockade with trastuzumab is still an important choice in developing nations, where dual blockade can be procured by only a handful of patients. Also, patient stratification for appropriate neoadjuvant regimen is important in the light of newer drugs like Pertuzumab and TDM1.

In conclusion, even in LABC, TCH had good response

in terms of pCR and survival outcomes comparable with adjuvant trials. Thus, one can be encouraged to use TCH based chemotherapy in Her2 positive breast cancers in neoadjuvant setting. With the advent of dual HER2 blockade, single HER2 blockade with trastuzumab is still an important choice in developing nations, where dual blockade can be procured by only a handful of patients. Also, patient stratification for appropriate neoadjuvant regimen is important in the light of newer drugs like Pertuzumab and TDM1.

### Ethics

The present study was approved by the Institutional Review Board of Rajiv Gandhi Cancer Institute & Research Centre, Delhi, India (vide letter no. RGCIRC / IRB / 74 / 2017) and was given a waiver from the informed consenting process. The study was conducted as per the Helsinki Declaration.

### Funding

No funding

### Conflict of interest

The authors have no conflicts of interest to declare.

### Author contributions

Conception or design of the work: DCD

Acquisition, analysis, or interpretation of data for the work: SB, PG, CA, PJ, RT, AS, SP, KDC

Drafting the work or revising it critically for important intellectual content: DCD, SB, PG, CA, PJ, RT, AS, SP, KDC

Final approval of the version to be published: DCD, SB, PG, CA, PJ, RT, AS, SP, KDC

### References

1. Bray F, Ferlay J, Soerjomataram I, Siegel RL, Torre LA, Jemal A. Global cancer statistics 2018: GLOBOCAN estimates of incidence and mortality worldwide for 36 cancers in 185 countries. *CA: A Cancer Journal for Clinicians*. 2018 09 12;68(6):394-424. <https://doi.org/10.3322/caac.21492>
2. Ferlay J, Colombet M, Soerjomataram I, Mathers C, Parkin D, Piñeros M, Znaor A, Bray F. Estimating the global cancer incidence and mortality in 2018: GLOBOCAN sources and methods. *International Journal of Cancer*. 2018 Dec 06;144(8):1941-1953. <https://doi.org/10.1002/ijc.31937>
3. Agarwal G, Pradeep PV, Aggarwal V, Yip C, Cheung PSY. Spectrum of Breast Cancer in Asian Women. *World Journal of Surgery*. 2007 03 26;31(5):1031-1040. <https://doi.org/10.1007/s00268-005-0585-9>
4. Esteva FJ, Hortobagyi GN. Locally advanced breast cancer. *Hematology/Oncology Clinics of North America*. 1999 04;13(2):457-472. [https://doi.org/10.1016/s0889-8588\(05\)70065-4](https://doi.org/10.1016/s0889-8588(05)70065-4)
5. Prowell TM, Pazdur R. Pathological Complete Response and Accelerated Drug Approval in Early Breast Cancer. *New England Journal of Medicine*. 2012 06 28;366(26):2438-2441. <https://doi.org/10.1056/nejmp1205737>
6. Makris A, Powles T, Ashley S, Chang J, Hickish T, Tidy V, Nash A, Ford H. A reduction in the requirements for mastectomy in a randomized trial of neoadjuvant chemoendocrine therapy in primary breast cancer. *Annals*

- of Oncology. 1998 Nov;9(11):1179-1184. <https://doi.org/10.1023/a:1008400706949>
7. Mauriac L, MacGrogan G, Avril A, Durand M, Floquet A, Debled M, Dilhuydy J, Bonichon F. Neoadjuvant chemotherapy for operable breast carcinoma larger than 3 cm: A unicentre randomized trial with a 124-month median follow-up. *Annals of Oncology*. 1999 01;10(1):47-52. <https://doi.org/10.1023/a:1008337009350>
  8. Goldie JH, Coldman AJ. A mathematic model for relating the drug sensitivity of tumors to their spontaneous mutation rate. *Cancer Treat Rep*. 1979 Dec;63(11-12):1727-33.
  9. Gunduz N, Fisher B, Saffer E. Effect of surgical removal on the growth and kinetics of residual tumor. *Cancer Res*. 1979 Oct;39(10):3861-5.
  10. Fisher ER, Wang J, Bryant J, Fisher B, Mamounas E, Wolmark N. Pathobiology of preoperative chemotherapy. *Cancer*. 2002 07 31;95(4):681-695. <https://doi.org/10.1002/cncr.10741>
  11. Fisher B, Gunduz N, Saffer E. Influence of the interval between primary tumor removal and chemotherapy on kinetics and growth of metastases. *Cancer Res*. 1983 Apr;43(4):1488-92.
  12. CHEN W, HE J, SONG S, WANG M, WU H, WANG X. Efficacy of TCH/TEC neoadjuvant chemotherapy for the treatment of HER-2-overexpressing breast cancer. *Oncology Letters*. 2015 01 28;9(4):1922-1926. <https://doi.org/10.3892/ol.2015.2912>
  13. Guiu S, Liegard M, Favier L, van Praagh I, Largillier R, Weber B, Coeffic D, Moreau L, Priou F, Campone M, Gligorov J, Vanlemmens L, Trillet-Lenoir V, Arnould L, Coudert B. Long-term follow-up of HER2-overexpressing stage II or III breast cancer treated by anthracycline-free neoadjuvant chemotherapy. *Annals of Oncology*. 2011 02;22(2):321-328. <https://doi.org/10.1093/annonc/mdq397>
  14. Gianni L, Eiermann W, Semiglazov V, Manikhas A, Lluch A, Tjulandin S, Zambetti M, Vazquez F, Byakhov M, Lichinitser M, Climent MA, Ciruelos E, Ojeda B, Mansutti M, Bozhok A, Baronio R, Feyereislova A, Barton C, Valagussa P, Baselga J. Neoadjuvant chemotherapy with trastuzumab followed by adjuvant trastuzumab versus neoadjuvant chemotherapy alone, in patients with HER2-positive locally advanced breast cancer (the NOAH trial): a randomised controlled superiority trial with a parallel HER2-negative cohort. *The Lancet*. 2010 01;375(9712):377-384. [https://doi.org/10.1016/s0140-6736\(09\)61964-4](https://doi.org/10.1016/s0140-6736(09)61964-4)
  15. Polychemotherapy for early breast cancer: an overview of the randomised trials. Early Breast Cancer Trialists' Collaborative Group. *Lancet*. 1988 Sep;352(9132):930-42.
  16. Buzdar AU, Ibrahim NK, Francis D, Booser DJ, Thomas ES, Theriault RL, Pusztai L, Green MC, Arun BK, Giordano SH, Cristofanilli M, Frye DK, Smith TL, Hunt KK, Singletary SE, Sahin AA, Ewer MS, Buchholz TA, Berry D, Hortobagyi GN. Significantly Higher Pathologic Complete Remission Rate After Neoadjuvant Therapy With Trastuzumab, Paclitaxel, and Epirubicin Chemotherapy: Results of a Randomized Trial in Human Epidermal Growth Factor Receptor 2-Positive Operable Breast Cancer. *Journal of Clinical Oncology*. 2005 06 01;23(16):3676-3685. <https://doi.org/10.1200/jco.2005.07.032>
  17. Buzdar AU, Valero V, Ibrahim NK, Francis D, Broglio KR, Theriault RL, Pusztai L, Green MC, Singletary SE, Hunt KK, Sahin AA, Esteva F, Symmans WF, Ewer MS, Buchholz TA, Hortobagyi GN. Neoadjuvant Therapy with Paclitaxel followed by 5-Fluorouracil, Epirubicin, and Cyclophosphamide Chemotherapy and Concurrent Trastuzumab in Human Epidermal Growth Factor Receptor 2-Positive Operable Breast Cancer: An Update of the Initial Randomized Study Population and Data of Additional Patients Treated with the Same Regimen. *Clinical Cancer Research*. 2007 01 01;13(1):228-233. <https://doi.org/10.1158/1078-0432.ccr-06-1345>
  18. Untch M, Rezai M, Loibl S, Fasching PA, Huober J, Tesch H, Bauerfeind I, Hilfrich J, Eidtmann H, Gerber B, Hanusch C, Kühn T, du Bois A, Blohmer J, Thomssen C, Dan Costa S, Jackisch C, Kaufmann M, Mehta K, von Minckwitz G. Neoadjuvant Treatment With Trastuzumab in HER2-Positive Breast Cancer: Results From the GeparQuattro Study. *Journal of Clinical Oncology*. 2010 04 20;28(12):2024-2031. <https://doi.org/10.1200/jco.2009.23.8451>
  19. Pierga J, Delaloue S, Espié M, Brain E, Sigal-Zafrani B, Mathieu M, Bertheau P, Guinebretière JM, Spielmann M, Savignoni A, Marty M. A multicenter randomized phase II study of sequential epirubicin/cyclophosphamide followed by docetaxel with or without celecoxib or trastuzumab according to HER2 status, as primary chemotherapy for localized invasive breast cancer patients. *Breast Cancer Research and Treatment*. 2010 05 18;122(2):429-437. <https://doi.org/10.1007/s10549-010-0939-3>
  20. de Azambuja E, Holmes AP, Piccart-Gebhart M, Holmes E, Di Cosimo S, Swaby RF, Untch M, Jackisch C, Lang I, Smith I, Boyle F, Xu B, Barrios CH, Perez EA, Azim HA, Kim S, Kuemmel S, Huang C, Vuylsteke P, Hsieh R, Gorbunova V, Eniu A, Dreosti L, Tavartkiladze N, Gelber RD, Eidtmann H, Baselga J. Lapatinib with trastuzumab for HER2-positive early breast cancer (NeoALTO): survival outcomes of a randomised, open-label, multicentre, phase 3 trial and their association with pathological complete response. *The Lancet Oncology*. 2014 09;15(10):1137-1146. [https://doi.org/10.1016/s1470-2045\(14\)70320-1](https://doi.org/10.1016/s1470-2045(14)70320-1)
  21. Gianni L, Pienkowski T, Im Y, et al. Efficacy and safety of neoadjuvant pertuzumab and trastuzumab in women with locally advanced, inflammatory, or early HER2-positive breast cancer (NeoSphere): a randomised multicentre, open-label, phase 2 trial. *Lancet Oncol*. 2012 Jan;13(1):25-32.
  22. Schneeweiss A, Chia S, Hickish T, Harvey V, Eniu A, Hegg R, Tausch C, Seo J, Tsai Y, Ratnayake J, McNally V, Ross G, Cortés J. Pertuzumab plus trastuzumab in combination with standard neoadjuvant anthracycline-containing and anthracycline-free chemotherapy regimens in patients with HER2-positive early breast cancer: a randomized phase II cardiac safety study (TRYPHAENA). *Annals of Oncology*. 2013 09;24(9):2278-2284. <https://doi.org/10.1093/annonc/mdt182>
  23. von Minckwitz G, Untch M, Nüesch E, Loibl S, Kaufmann M, Kümmel S, Fasching PA, Eiermann W, Blohmer J, Costa SD, Mehta K, Hilfrich J, Jackisch C, Gerber B, du Bois A, Huober J, Hanusch C, Konecny G, Fett W, Stickeler E, Harbeck N, Müller V, Jüni P. Impact of treatment characteristics on response of different breast cancer phenotypes: pooled analysis of the German neo-adjuvant chemotherapy trials. *Breast Cancer Research and Treatment*. 2010 Nov 03;125(1):145-156. <https://doi.org/10.1007/s10549-010-1228-x>
  24. Kaufmann M, von Minckwitz G, Bear H, Buzdar A, McGale P, Bonnefoi H, Colleoni M, Denkert C, Eiermann W, Jackesz R, Makris A, Miller W, Pierga J, Semiglazov V, Schneeweiss A, Souchon R, Stearns V, Untch M, Loibl S. Recommendations from an international expert panel on the use of neoadjuvant (primary) systemic treatment of operable breast cancer: new perspectives 2006. *Annals of Oncology*. 2007 Dec;18(12):1927-1934. <https://doi.org/10.1093/annonc/mdm201>
  25. Weigel MT, Dowsett M. Current and emerging biomarkers in breast cancer: prognosis and prediction. *Endocrine-*

- Related Cancer. 2010 Dec;17(4):R245-R262. <https://doi.org/10.1677/erc-10-0136>
26. Fasching PA, Heusinger K, Haerberle L, Niklos M, Hein A, Bayer CM, Rauh C, Schulz-Wendtland R, Bani MR, Schrauder M, Kahmann L, Lux MP, Strehl JD, Hartmann A, Dimmler A, Beckmann MW, Wachter DL. Ki67, chemotherapy response, and prognosis in breast cancer patients receiving neoadjuvant treatment. *BMC Cancer*. 2011 Nov 14;11(1). <https://doi.org/10.1186/1471-2407-11-486>
  27. Kurozumi S, Inoue K, Takei H, Matsumoto H, Kurosumi M, Horiguchi J, Takeyoshi I, Oyama T. ER, PgR, Ki67, p27Kip1, and histological grade as predictors of pathological complete response in patients with HER2-positive breast cancer receiving neoadjuvant chemotherapy using taxanes followed by fluorouracil, epirubicin, and cyclophosphamide concomitant with trastuzumab. *BMC Cancer*. 2015 09 07;15(1). <https://doi.org/10.1186/s12885-015-1641-y>
  28. MacGrogan G, Mauriac L, Durand M, Bonichon F, Trojani M, de Mascarel I, Coindre J. Primary chemotherapy in breast invasive carcinoma: predictive value of the immunohistochemical detection of hormonal receptors, p53, c-erbB-2, MiB1, pS2 and GST pi. *British Journal of Cancer*. 1996 Nov;74(9):1458-1465. <https://doi.org/10.1038/bjc.1996.565>
  29. Kuerer HM, Newman LA, Smith TL, Ames FC, Hunt KK, Dhingra K, Theriault RL, Singh G, Binkley SM, Sneige N, Buchholz TA, Ross MI, McNeese MD, Buzdar AU, Hortobagyi GN, Singletary SE. Clinical Course of Breast Cancer Patients With Complete Pathologic Primary Tumor and Axillary Lymph Node Response to Doxorubicin-Based Neoadjuvant Chemotherapy. *Journal of Clinical Oncology*. 1999 02;17(2):460-460. <https://doi.org/10.1200/jco.1999.17.2.460>
  30. Kolberg H, Akpolat-Basci L, Stephanou M, Aktas B, Hannig CV, Liedtke C. Neoadjuvant Chemotherapy with Docetaxel, Carboplatin and Weekly Trastuzumab Is Active in HER2-Positive Early Breast Cancer: Results after a Median Follow-Up of over 4 Years. *Breast Care*. 2016;11(5):323-327. <https://doi.org/10.1159/000452079>
  31. Kolberg H, Akpolat-Basci L, Otterbach F, Drumm A, Tirier C. P304 Docetaxel, carboplatin and weekly trastuzumab are active as neoadjuvant therapy in operable HER2-positive breast cancer. *The Breast*. 2011 Mar 1;20:S74.
  32. Untch M, Fasching PA, Konecny GE, Hasmüller S, Lebeau A, Kreienberg R, Camara O, Müller V, du Bois A, Kühn T, Stickeler E, Harbeck N, Höss C, Kahlert S, Beck T, Fett W, Mehta KM, von Minckwitz G, Loibl S. Pathologic Complete Response After Neoadjuvant Chemotherapy Plus Trastuzumab Predicts Favorable Survival in Human Epidermal Growth Factor Receptor 2–Overexpressing Breast Cancer: Results From the TECHNO Trial of the AGO and GBG Study Groups. *Journal of Clinical Oncology*. 2011 09 01;29(25):3351-3357. <https://doi.org/10.1200/jco.2010.31.4930>
  33. Gogia A, Tiwari A, Deo S, Shukla N, Mathur S, Sharma D. Retrospective study of efficacy and safety of neoadjuvant docetaxel, carboplatin, and trastuzumab in HER2-positive locally advanced and oligometastatic breast cancer: An Indian experience. *Indian Journal of Cancer*. 2017;54(1):343. [https://doi.org/10.4103/ijc.ijc\\_152\\_17](https://doi.org/10.4103/ijc.ijc_152_17)
  34. Bayraktar S, Gonzalez-Angulo AM, Lei X, Buzdar AU, Valero V, Melhem-Bertrandt A, Kuerer HM, Hortobagyi GN, Sahin AA, Meric-Bernstam F. Efficacy of neoadjuvant therapy with trastuzumab concurrent with anthracycline- and nonanthracycline-based regimens for HER2-positive breast cancer. *Cancer*. 2011 09 27;118(9):2385-2393. <https://doi.org/10.1002/cncr.26555>
  35. Baselga J, Bradbury I, Eidtmann H, Di Cosimo S, de Azambuja E, Aura C, Gómez H, Dinh P, Fauria K, Van Dooren V, Aktan G, Goldhirsch A, Chang T, Horváth Z, Coccia-Portugal M, Domont J, Tseng L, Kunz G, Sohn JH, Semiglazov V, Lerzo G, Palacova M, Probachai V, Pusztai L, Untch M, Gelber RD, Piccart-Gebhart M. Lapatinib with trastuzumab for HER2-positive early breast cancer (NeoALTTO): a randomised, open-label, multicentre, phase 3 trial. *The Lancet*. 2012 02;379(9816):633-640. [https://doi.org/10.1016/s0140-6736\(11\)61847-3](https://doi.org/10.1016/s0140-6736(11)61847-3)



This work is licensed under a Creative Commons Attribution-Non Commercial 4.0 International License.