

# Promoter Hypermethylation of ATG16L2, TFAP2A, EBF2, Calcitonin, ABL1 Kinase Domain T315I Mutation Association with Imatinib Therapy Resistance and Median Survival in CML Patients of North-East India

Anupam Sarma<sup>1</sup>, Amal Chandra Kataki<sup>2</sup>, Avdhesh Kumar Rai<sup>3</sup>, Munlima Hazarika<sup>4</sup>, Partha Sarathi Roy<sup>4</sup>, Manoj Kalita<sup>5</sup>, Manab Deka<sup>6</sup>, Indranil Chattopadhyay<sup>7</sup>

<sup>1</sup>Department of Pathology, Dr B. Borooah Cancer Institute, Guwahati-7810116, Assam, India. <sup>2</sup>Dr B. Borooah Cancer Institute, Guwahati-781016, Assam, India. <sup>3</sup>DBT Centre for Molecular Biology & Cancer Research, Dr B. Borooah Cancer Institute, Guwahati-781016, Assam, India. <sup>4</sup>Department of Medical Oncology, Dr B. Borooah Cancer Institute, Guwahati-781016, Assam, India. <sup>5</sup>Statistician, Population Based Cancer Registry, Dr B. Borooah Cancer Institute, Guwahati-781016, Assam, India. <sup>6</sup>Gauhati University Institute of Science & Technology, Gauhati University, Guwahati-781024, Assam, India. <sup>7</sup>Department of Life Sciences, Central University of Tamil Nadu, Thiruvavur, Tamil Nadu, India.

## Abstract

**Background and Objectives:** Chronic myeloid leukemia (CML) initiation and progression is regulated by epigenetic and genetic alterations. Imatinib therapy resistance in CML patients is important clinical issue. To understand association of kinase domain mutation and promoter hypermethylation of genes with imatinib therapy resistance hold significance in CML patients of North-East India. This study is a hospital based cross sectional study. **Methods:** A total of Sixty three (n=63) CML patients undergone imatinib mesylate were enrolled for the study. ABL kinase domain T315I mutation was analyzed by Allele specific- PCR (AS-PCR) and confirmed by sequencing. Promoter hypermethylation was analyzed by Methylation specific PCR (MS-PCR). The Chi square test and Fisher exact test used in SPSS ver19. **Results:** Tyrosine Kinase domain mutation T315I was found in 30.1% (19/63). The promoter hypermethylation of Calcitonin, ATG16L2, TFAP2A, EBF2 gene was detected in 42.9% (n=27), 28.6% (n=18), 38.1% (n=24), 27% (n= 17) CML patients respectively. Median relapse free survival was 21 months and statistically significant for CML patients without T315I mutation compared to patients with T315I mutation who has 12 months median relapse free survival (p=0.005). Median survival was 19 months for patients without EBF2 promoter hypermethylation and also statistically significant compared to CML patients with promoter hypermethylation (12 months) (p=0.026). **Interpretation and Conclusions:** We conclude that among imatinib resistant CML patients of North- East India harbouring T315I mutation of ABL1 Kinase domain and promoter hypermethylation of EBF2 gene have significantly lower median relapse free survival.

**Keywords:** Chronic Myeloid Leukemia- T315I mutation- Promoter hypermethylation- Imatinib mesylate- Median Survival

*Asian Pac J Cancer Care*, 8 (1), 35-42

Submission Date: 10/15/2022 Acceptance Date: 12/27/2022

## Introduction

In chronic myeloid leukemia (CML), Philadelphia chromosome is the most common cytogenetic abnormality arising due to reciprocal translocation t (9; 22) (q34; q11)

between the Abelson leukemia virus (ABL) oncogene on chromosome 9 and the breakpoint cluster region (BCR) gene on chromosome 22 [1]. BCR-ABL fusion oncogene

### Corresponding Author:

Dr. Avdhesh Kumar Rai

Assistant Research Officer (Scientific Officer-D), DBT Centre for Molecular Biology & Cancer Research, Dr B. Borooah Cancer Institute, Gopinath Nagar, Guwahati-781016, Assam, India.

Email: avdheshrai@gmail.com

through signaling pathways as STAT, MAPK/ERK cascades, PI3K/AKT/mTOR plays an important role in the pathogenesis of CML [2]. BCR-ABL tyrosine kinase inhibitor (TKI), imatinib mesylate (IM), is first line of treatment in the CML patients [3]. However patients have shown primary resistance and significant number of patients developed acquired/secondary resistance to IM treatment [4]. Resistance to imatinib therapy may be affected by BCR-ABL-dependent and /or BCR-ABL-independent mechanisms [5].

CML progression towards blast crisis requires accumulation of epigenetic and genetic alterations along with BCR-ABL1 translocation [6]. Presences of point mutations threonine-to-isoleucine exchange at amino acid position 315 (T315I) in the BCR-ABL1 kinase domain is found as the most prevalent mechanism along with other ABL kinase domain mutations of resistance to imatinib [7,8]. Aberrant DNA methylation play an important role in CML progression where gene promoter hypermethylation predominates compared to hypomethylation. Epigenetic deregulation of expression of various genes act as crucial drivers in promoting Leukemic stem cells (LSC) self-renewal potential leads to advanced phase of CML [9]. In CML patients with BCR promoter hypermethylation have better response to IM therapy [10].

An autophagy related gene, ATG16L2 (autophagy related 16-like 2) promoter hypermethylation resulted in significantly decreased major molecular response (MMR) to IM treatment [11]. Enhanced frequency of promoter hypermethylation of TFAP2A (transcription factor AP2 alpha) and EBF2 (early B cell factor 2) was observed in CML blast crisis phase patients compared to chronic phase [11]. Calcitonin gene promoter hypermethylation was found to be associated with progression of CML disease phase [12].

There is lack of data about T315I mutations and promoter hypermethylation of ATG16L2, TFAP2A, EBF2, Calcitonin genes in CML patients of North-East India with reference to imatinib therapy resistance.

## Materials and Methods

Diagnosed CML patients treated with imatinib mesylate (IM) as frontline treatment were enrolled for this study with informed written consent. The study was reviewed and approved by institutional ethics committee (BBCI/IEC-22/03) and conducted from Oct 2014 to Sep 2017. The patients were followed for at least 12 months with imatinib dose of 400 mg per day.

### *Patient Clinical assessment*

For each CML patient, diagnosis was confirmed by hematological as well as BCR-ABL1 fusion gene molecular analysis. The response to imatinib therapy was evaluated based on the assessment of hematologic and molecular responses according to NCCN recommendations [7].

### *Extraction of genomic DNA from Whole blood*

Whole blood genomic DNA was extracted from leukocytes using QIAamp DNA Blood Mini Kit (Qiagen,

Germany) following the manufacturer's instructions. The quantity and quality of the DNA was assessed by Biophotometer plus (Eppendorf, Germany) at 260, 280nm wavelength and 1% agarose (Thermoscientific, USA) gel electrophoresis (SCIEPLAS, UK).

### *Isolation of total RNA and preparation of cDNA*

1 ml peripheral blood or Bone marrow aspirate used with QIAamp RNA Blood Mini Kit (Qiagen, Germany) following the manufacturer's instructions. 1µg of Total RNA was used for cDNA synthesis using High-Capacity cDNA Reverse Transcription Kits with RNase inhibitor (ThermoFisher Scientific, USA) following the manufacturer's instructions.

### *Quantitative BCR-ABL1 transcripts quantification*

BCR ABL1 major p210 b2a2 or b3a2 transcripts quantification was done using ipsogen® BCR-ABL1 Mbr IS-MMR kit ( Qiagen, Germany) in peripheral blood samples or bone marrow of chronic myeloid leukemia (CML) patients as per the manufacturer's protocol (BioRad, USA).

### *Allele specific-PCR (AS-PCR) to Detect T315I mutation*

Allele specific-PCR (AS-PCR) for detection of T315I mutation in imatinib resistant CML patient's samples was performed using previously described PCR primer sequences [13].

AS-PCR performed on Proflex Thermal Cycler (Thermoscientific, USA) in 25µL mixture of 2.5µL cDNA template, 12.5µL EmeraldAmp MAX PCR Master mix (Takara, Japan) 4 pmol each of Mutant T315I & Wild type primers, and 2pmol of β-actin primers. Thermal profile of reaction- 1 cycle of 95°C 5min, followed by 35 of cycles 94°C 30 sec, 50°C 40 sec, 72°C 1 min, and 1 cycle of 72°C 7 min. PCR products size were: 158 bp T315I mutant, 374 bp T315WT, and 540 bp β-actin (Figure 1). The PCR products were resolved on a 2.5% agarose gel (ThermoScientific, USA) stained with ethidium bromide (0.625mg/ml, ThermoScientific, USA) to image in GelDOC XR system (BioRad). The positive control for T315I mutation and Negative control were used.

### *Detection of BCR-ABL KD mutation by DNA sequencing*

The primary PCR step was performed using a pair of primers designed to cover BCR-ABL gene. Two micrograms of cDNA template were amplified in a total volume of 20 µL with the following constituents, 0.3 U of Maxima Hotstart Taq DNA polymerase (ThermoFisher Scientific, USA), 10X Maxima Hotstart buffer, 1.5 mmol/L of MgCl<sub>2</sub>, 0.2 mmol/L of each dNTPs, 10 pmol of each primers (Forward primers: B2 A F 5'-ACAGCATTCCGCTGACCATCAATAAG-3' and Reverse primer: B2 A R 5'-ATGGTCCAGAGGATCGCTCTCT-3') as previously described. A secondary PCR step for amplification of Kinase Domain amino acid codon 206-428 using the internal two primer pairs, were designed to amplify two partially overlapping fragments

consisting of fragment 1 Forward primers: ABL1F (5'-TGGTTCATCATCATTCAACGGTGG-3') and Reverse primers: ABL1R (5'-TCTGAGTGGCCATGTACAGCAGC-3'), and fragment 2 Forward primers: ABL2F (5'-TCATGACCTACGGGAACCTC-3') and Reverse primers: ABL2R (5'-ATACTCCAAATGCCAGACG-3') as previously described. For sequencing, the PCR products were purified using the Qiaquick PCR purification kit (Qiagen, USA) following the manufacturer's protocol. Sequencing with forward and/or reverse primers in secondary PCR steps was carried out by the ABI3730XL DNA analyzer (Applied Biosystems, USA) using ABI BigDye terminator cycle sequencing kits (Applied Biosystems, USA). The results were compared with the WT ABL1 (accession no. NM\_005157.3).

#### Promoter methylation analysis by MS-PCR

2µg of genomic DNA was modified by EpiTect Bisulfite Kit (Qiagen, Germany) as per the manufacturer's instructions. The EpiTect Bisulfite Kit protocol in brief comprises steps: bisulfite-mediated conversion of unmethylated cytosines; binding of the converted single-stranded DNA to the membrane of an EpiTect spin column; washing; desulfonation of membrane-bound DNA; washing of the membrane-bound DNA to remove desulfonation agent; and elution of the pure, converted DNA from the spin column. The eluted DNA was used for the analysis of DNA methylation by Methylation Specific PCR (MS-PCR).

Methylation specific PCR: A dual primer pair (specific for methylated and unmethylated DNA sequences) was used to ascertain the relative amounts of methylated and unmethylated strands status for genes – ATG16L2, Calcitonin, TFAP2A and EBF2. In 25µL mixture of 3µL Converted DNA template, 12.5µL EmeraldAmp MAX PCR Master mix (Takara, Japan), respective genes methylated and unmethylated Forward primers and Reverse primers 4 pmol were used. Primer sequence, annealing, PCR products size details are in mentioned in (Table 1). The thermal profile was as follows: 95°C 10min, followed by 40 cycles of denaturation at 95°C 20 sec, annealing (Table 2) 45 sec, extension at 72°C 45 sec, and final extension at 72°C 5 min. PCR products of ATG16L2, Calcitonin, TFAP2A and EBF2 were 147bp, 190bp, 108bp and 112bp respectively. The PCR products were resolved in 2.5% agarose gel (Figure 2).

#### Statistical analysis

The data acquired during the period was tested by appropriate statistical methods for significance using SPSS ver19 software. The Chi square test and Fisher exact test used to test the statistical significance of T315I mutation and promoter hypermethylation ATG16L2, Calcitonin, TFAP2A and EBF2 with imatinib resistance. Where appropriate, 95% confidence intervals (CI) was computed and the level of statistical significant test was set at 0.05. For median survival comparison, Kaplan–Meier curves were plotted and compared using the log-rank test.

## Results

#### Clinicopathological characteristics

At the time of CML diagnosis, patients in Clinical Phase were as follows- 81% (n=51) chronic, 11.1% (n=7) accelerated and 7.9% (n=5) blast phase. Imatinib treatment responding patients (till last follow up) were 28.6% (n=18) and Imatinib treatment resistant were 71.4% (n=45).

#### Frequency of T315I Mutation and Promoter Hypermethylation

Among CML patients, tyrosine Kinase domain mutation T315I was found in 30.1% (19/63). The promoter hypermethylation of Calcitonin, ATG16L2, TFAP2A, EBF2 genes were detected in 42.9% (n=27), 28.6% (n=18), 38.1% (n=24), 27% (n= 17) CML patients respectively.

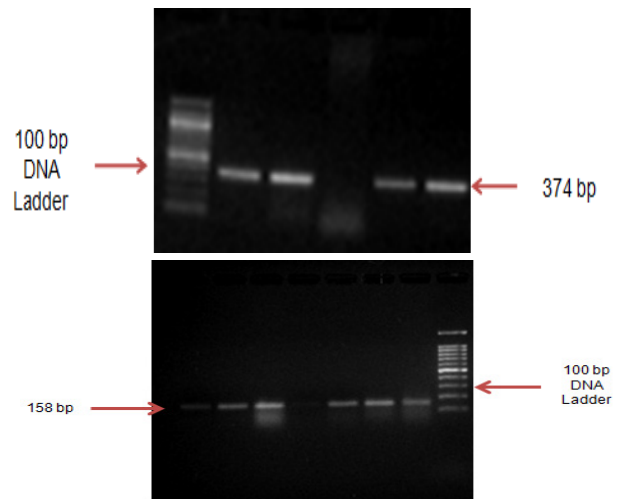


Figure 1. Agarose Gel Image AS-PCR Showing Amplification of T315I Mutation in CML Samples (band at 158 bp) and wild type (band at 374) (M, 100 bp ladder; NTC, negative control).

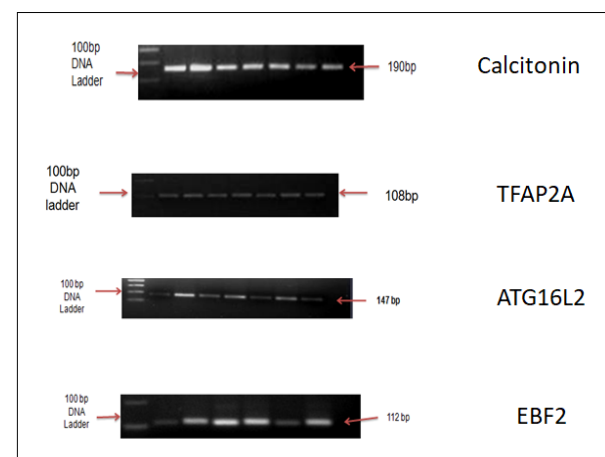


Figure 2. Agarose Gel Image for MS PCR of Calcitonin Gene (190bp methylated), TFAP2A Gene (108 bp methylated), ATG16L2 Gene (147 bp methylated), EBF2 Gene (112bp methylated)

Table 1. Details of Primer Sequences, PCR Product Size for MS-PCR

Gene	Forward (5'-3')	Reverse (5'-3')	Ta	Size (bp)
Calcitonin - M	TTTTTAAGTAGTCGGGATTATAGGC	ATTTATAATAAACCGAACGCGAT	60	190
Calcitonin - U	TTTAAGTAGTTGGGATTATAGGTGT	AAATTTATAATAAACCAAACACAAT	60	190
ATG16L2 M	AAGGTTATTGATAGGTAGAGTTCCGG	AAAACAAAAAATAAACCCTACTCGAA	62	147
ATG16L2 U	AAGGTTATTGATAGGTAGAGTTTGG	AAAACAAAAAATAAACCCTACTACAAA	62	147
EBF2 M	GTTTTTTTCGGTGTTTAGTTGC	ATACAACCATACAAAACCTCTCCGTT	58	112
EBF2 U	TGTGTTTTTTTTGGTGTTTAGTTGT	ATACAACCATACAAAACCTCTCCATT	58	115
TFAP2A M	TTTATCGTCGGTAGTTAGTATTTTGC	TCCAAAACATTTTCATAAATCGAC	56	108
TFAP2A U	ATTGTTGGTAGTTAGTATTTTGTGT	TTCCAAAACATTTTCATAAATCAAC	56	106

Table 2. Association of Resistant Frequency to Imatinib Treatment with T315I Mutation and Promoter Hypermethylation

T315I mutation & promoter hypermethylation		HR	P-Value	95.0% CI for Exp(B)	
				Lower	Upper
T315I Mutation	Negative	1			
	Positive	2.181	0.013*	1.181	4.029
Calcitonin	Negative	1			
	Positive	1.301	0.379	0.724	2.337
ATG16L2	Negative	1			
	Positive	1.437	0.242	0.783	2.638
TFAP2A	Negative	1			
	Positive	1.431	0.234	0.793	2.581
EBF2	Negative	1			
	Positive	2.014	0.033*	1.056	3.839

\*Statistically Significant

#### Response To Imatinib Treatment with Respect To T315I Mutation and Promoter Hypermethylation

Among imatinib Resistant CML patients, T315I gene mutation was found to be 40.0% (18/45). Promoter hypermethylation of ATG16L2- 35.5% (16/45), TFAP2A- 46.6% (21/45), Calcitonin- 51.1% (23/45) and EBF2- 33.3% (15/45). T315I mutation in CML patients with Chronic phase- 23.5% (12/51), Accelerated phase- 57.1% (4/7) and Blast phase-60% (3/5).

Secondary imatinib resistance was 73.7% in patients with mutation of T315I gene (14/19) whereas

promoter hypermethylation of Calcitonin-74.1% (20/27), ATG16L2-77.8% (14/18), TFAP2A-75.0% (18/24) and EBF2-70.6% (12/17) in patients with secondary imatinib resistance. The resistance frequency to imatinib treatment was found to be statistically significant and 2 times higher in patients with T315I mutations (HR=2.181, CI 1.18-4.03, P=0.013) and EBF2 promoter hypermethylation (HR=2.014, CI 1.06-3.84, P=0.033). A moderate level of increasing failure rate but not statistically significant was also observed for the patients with hypermethylation in calcitonin (HR=1.301, CI

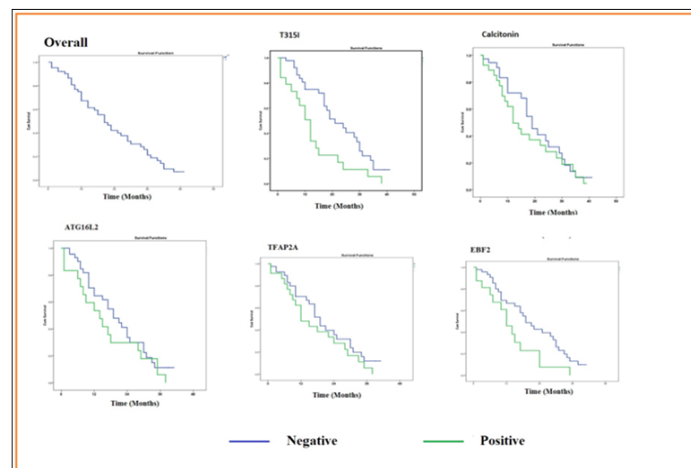


Figure 3. Median Relapse Survival Time with Respect to T315I Mutation and Promoter Hypermethylation of Calcitonin, ATG16L2, TFAP2A and EBF2.

Table 3. Association of Median Relapse Free Survival Time with T315I Mutation and Promoter Hypermethylation

	Median Estimate in Months	95% Confidence Interval		P-Value
		Lower Bound	Upper Bound	
Overall Relapse Free Survival	17	12.86	21.14	
T315I Mutation				
Negative	21	13.45	28.55	0.005*
Positive	12	8.89	15.11	
Calcitonin Promoter Hypermethylation				
Negative	19	14.6	23.4	0.367
Positive	12	7.28	16.72	
ATG16L2 Promoter Hypermethylation				
Negative	19	13	25	0.229
Positive	14	6.02	21.98	
TFAP2A Promoter Hypermethylation				
Negative	19	15.29	22.71	0.221
Positive	12	6.44	17.56	
EBF2 Promoter Hypermethylation				
Negative	19	13.61	24.39	0.026*
Positive	12	7.46	16.54	

\*Statistically Significant

0.724-2.337, P=0.379), ATG16L2 (HR =1.437, CI 0.783-2.638, p=0.242) and TFAP2 (HR=1.431, CI 0.793-2.581, P=0.234) genes (Table 2).

#### *Association of Relapse Free Survival with T315I Mutation and Promoter Hypermethylation*

Median relapse free survival was 21 months and statistically significant for CML patients without T315I mutation compared to patients with T315I mutation who has 12 months median relapse free survival (p=0.005). Median survival was 19 months for patients without EBF2 promoter hypermethylation and also statistically significant compared to CML patients for patients with promoter hypermethylation (12 months) (p=0.026). Patients with Calcitonin, ATG16L2, TFAP2A promoter Hypermethylation have reduced relapse free survival compared to patients without promoter hypermethylation but this association was not statistically significant (Table 3, Figure 3).

## Discussion

Imatinib provides an effective and durable therapy for CML, as shown in 6 year follow-up of phase III International Randomized IRIS study that this agent induced complete hematologic response (CHR) in the majority (98%) of newly diagnosed patients in chronic phase of the disease and Complete Molecular Response (CMR) in about 87% of patients [3]. According to the results in the 8<sup>th</sup> year of the IRIS study, the administration of imatinib could not be continued because over long period about one third of patients with CML-Chronic phase developed resistance or intolerance [14].

In present study among the resistant 45 patients, 3 have primary resistance and remaining 42 patients

developed secondary resistance in the due course of imatinib therapy. We found secondary resistance was high among the patients with mutation of T315I (73.7%, 14/19). An Indian study found resistance or relapses in 38% of the CML patients [15]. Another Indian study shown 32.2% patient has detectable kinase domain mutations. The most common mutation was T315I in 31% patients [16]. Primary and secondary resistance was very high in the patients registered as imatinib treated old cases [17]. It was also shown 33% CML patients had not achieved optimal IM response [18]. It has been reported that up to 40% of patients with CP CML become resistant to imatinib [19,20]. Cortes et al. showed frequency of BCR-ABL1 mutations 54% (61/112) out of which 16% were T315I mutation [21]. Horvat et al found T315I mutation in 17% of CML patients and concluded T315I mutation detection as essential for treatment of choice in T315I mutation carriers for stem-cell transplantation [22]. A Korean study reported frequency of BCR-ABL1 mutations 63% (70/111) out of which 24% were T315I mutation [23]. A retrospective study has identified T315I mutation in 50% of cases in imatinib resistant CML patients [24]. T315I mutation detection in CML patients is clinically useful to optimize outcomes for treatment failure or suboptimal response to imatinib [25]. Yap et al. found 22.7% IM resistant CML patients harbor T315I mutation [26]. The variations in frequency of T315I in different population may be due the differences in patient characteristics, methodology of detection of T315I mutation etc.

Our study data shows that median survival was poor in patients with T315I mutation which is in agreement of the earlier study observations with variation in survival status.

Latin American LeukemiaNet (LALNET) study cohort found that CML patients with BCR-ABL1 mutations and

particularly T315I mutations had lower Progression-free (PFS) and overall survival (OS) (43% vs. 65% and 47% vs. 72%) at 5 years period [27]. Regardless of the stage of the CML, median survival was poor in patients with BCR-ABL1 kinase domain mutations [28, 29].

Dunwel et al demonstrated first time that ATG16L2 was methylated in 69 % of CML patients. Patients with Methylated ATG16L2 had significant reduction in major molecular response (MMR) at 12 or 18 month. Promoter hypermethylation of TFAP2A and EBF2 more prominent in blast crisis (BC) compared to chronic phase (CP) [11]. Nelkin et al found that aberrant DNA methylation of Calcitonin was 6% in chronic phase, 63% in accelerated phase and 92% in blast crisis [12]. Our study has shown reduced median survival in patients with methylated EBF2, ATG16L2, TFAP2A, Calcitonin compared to unmethylated patients samples.

In present study we found that T315I mutation and promoter hypermethylation of four genes studied together accounted for approx 73% of genetic plus epigenetic alterations in imatinib resistant patients. EBF promoter hypermethylation has significant relationship with reduction in median survival in imatinib resistant patient in our study.

Apart from ABL1 kinase domain mutations other mechanisms can cause resistance in CML. Immature leukemic cells (stem cells) may exhibit intrinsic (BCR/ABL-independent) resistance [30]. Four second generation ABL TKI dasatinib, nilotinib, bosutinib and bafetinib were developed to overcome imatinib-resistance. Identification of type of BCR-ABL1 mutation in TKI-resistant patients is very important [31]. According to NCCN guidelines, mutational analysis should be performed in patients with disease progression after first-line TKI treatment. But no second generation BCR-ABL TKIs can inhibit T315I mutation positive CML. So a third-generation BCR-ABL1 TKI ponatinib is already used in clinic [32]. A lot of novel agents which can override BCR-ABL1 KD mutations including T315I are being developed but their prohibitive cost remain limiting factor [33]. Measuring plasma imatinib level has been suggested as tool for drug compliance assessment [34]. Molecular monitoring for BCR-ABL1 along with ABL1 kinase domain mutational analysis before administering second generation or third generation TKIs help in better management of patients harboring these mutations. Resistance against imatinib therapy is becoming important clinical problem in the treatment of CML patients of North-East India.

In our study many of the resistant patients have shown higher frequency of T315I mutation and promoter hypermethylation of Calcitonin, ATG16L2, TFAP2A, EBF2. Imatinib treatment resistant patients without T315I mutation and promoter hypermethylation of Calcitonin, ATG16L2, TFAP2A, EBF2 may have other kinase domain mutations or promoter hypermethylation which were not analyzed by us. Promoter hypermethylation status of EBF2 along with calcitonin, ATG16L2 and TFAP2 genes may also help in imatinib therapy response assessment in North East Indian CML patients. Detection of T315I mutations

in CML patients of North-East India may be valuable during imatinib therapy.

In conclusion, we would like to conclude from current study data that imatinib resistant CML patients harbouring T315I mutation of ABL1 Kinase domain and promoter hypermethylation of EBF2 gene of North- East India has significantly lower median relapse free survival. Future studies may be required in large cohort of CML patients of North-East India to assess the impact of other mutations of ABL1 kinase domain and BCR- ABL1 independent mechanism which may be leading to imatinib resistance.

#### Conflicting Interest

(If present, give more details): All Authors declare there exist no competing interest with regard to present study.

#### Acknowledgements

We are grateful to Indian Council of Medical Research for financial assistance (Grant No. 5/7/1163/2014-RCH). We are thankful to Dr Nikhil Patkar, Department of Hematopathology, Tata Memorial Centre, Mumbai, for providing T315I mutation positive control.

#### References

1. Heisterkamp N, Stephenson JR, Groffen J, Hansen PF, Klein A, Bartram CR, Grosveld G. Localization of the c-abl oncogene adjacent to a translocation break point in chronic myelocytic leukaemia. *Nature*. 1983 Nov 17;306(5940):239-242. <https://doi.org/10.1038/306239a0>
2. Steelman LS, Abrams SL, Whelan J, Bertrand FE, Ludwig DE, Bäsecke J, Libra M, et al. Contributions of the Raf/MEK/ERK, PI3K/PTEN/Akt/mTOR and Jak/STAT pathways to leukemia. *Leukemia*. 2008 04;22(4):686-707. <https://doi.org/10.1038/leu.2008.26>
3. Druker BJ, Guilhot F, O'Brien SG, Gathmann I, Kantarjian H, Gattermann N, Deininger MWN, et al. Five-year follow-up of patients receiving imatinib for chronic myeloid leukemia. *The New England Journal of Medicine*. 2006 Dec 07;355(23):2408-2417. <https://doi.org/10.1056/NEJMoa062867>
4. Soverini S, Rosti G, Baccarani M, Martinelli G. Molecular monitoring. *Current hematologic malignancy reports*. 2014 03;9(1). <https://doi.org/10.1007/s11899-013-0192-z>
5. Rossari F, Minutolo F, Orciuolo E. Past, present, and future of Bcr-Abl inhibitors: from chemical development to clinical efficacy. *Journal of hematology & oncology*. 2018 06 20;11(1). <https://doi.org/10.1186/s13045-018-0624-2>
6. Perrotti D, Jamieson C, Goldman J, Skorski T. Chronic myeloid leukemia: mechanisms of blastic transformation. *The Journal of clinical investigation*. 2010 07;120(7). <https://doi.org/10.1172/JCI41246>
7. Pallera A, Altman JK, Berman E, Abboud CN, Bhatnagar B, Curtin P, DeAngelo DJ, et al. NCCN Guidelines Insights: Chronic Myeloid Leukemia, Version 1.2017. *Journal of the National Comprehensive Cancer Network: JNCCN*. 2016 Dec;14(12):1505-1512. <https://doi.org/10.6004/jnccn.2016.0162>
8. Cho Yu, Kim So, Chi Hs, Park Sj, Jang S, Park Cj, Seo Ej, et al. Detection of ABL1 kinase mutations in Philadelphia-positive patients exhibiting an inadequate molecular response using restriction fragment mass polymorphism

- and its clinical significance: a single-center experience in Korea. *International journal of laboratory hematology*. 2013 Dec;35(6). <https://doi.org/10.1111/ijlh.12091>
9. Hamilton A, Helgason gv, Schemionek M, Zhang B, Myssina S, Allan EK, Nicolini FE, et al. Chronic myeloid leukemia stem cells are not dependent on Bcr-Abl kinase activity for their survival. *Blood*. 2012 02 09;119(6):1501-1510. <https://doi.org/10.1182/blood-2010-12-326843>
  10. Youngil Koh, Dae-Young Kim, Sung-Hyo Park, Hyang-Min Byun, Inho Kim, Sung-Soo Yoon, et al. Increased BCR promoter DNA methylation status strongly correlates with favorable response to imatinib in chronic myeloid leukemia patients. *Oncology Letters*. 2011 01;2(1):181-187. <https://doi.org/10.3892/ol.2010.208>
  11. Dunwell T, Hesson L, Rauch TA, Wang L, Clark Re, Dallol A, Gentle D, et al. A genome-wide screen identifies frequently methylated genes in haematological and epithelial cancers. *Molecular cancer*. 2010 02 25;9. <https://doi.org/10.1186/1476-4598-9-44>
  12. Nelkin Bd, Przepiorka D, Burke Pj, Thomas ED, Baylin SB. Abnormal methylation of the calcitonin gene marks progression of chronic myelogenous leukemia. *Blood*. 1991 06 01;77(11).
  13. Wongboonma W, Thongnoppakhun W, Auewarakul C. A single-tube allele specific-polymerase chain reaction to detect T315I resistant mutation in chronic myeloid leukemia patients. *Journal of hematology & oncology*. 2011 02 01;4:7. <https://doi.org/10.1186/1756-8722-4-7>
  14. Deininger M, O'Brien SG, Guilhot F, et al. International Randomized Study of Interferon Vs STI571 (IRIS) 8-Year Follow up: Sustained Survival and Low Risk for Progression or Events in Patients with Newly Diagnosed Chronic Myeloid Leukemia in Chronic Phase (CML-CP) Treated with Imatinib. *Blood (ASH Annual Meeting Abstracts)*. 2009;114:1126.
  15. Parikh P. Report of chronic myeloid leukemia in chronic phase from Tata Memorial Hospital, Mumbai, 2002-2008. *Indian Journal of Medical and Paediatric Oncology : Official Journal of Indian Society of Medical & Paediatric Oncology*. 2013;34(3):164-167. <https://doi.org/10.4103/0971-5851.123716>
  16. Rajappa S, Mallavarapu KM, Gundeti S, Paul TR, Jacob RT, Digumarti R. Kinase domain mutations and responses to dose escalation in chronic myeloid leukemia resistant to standard dose imatinib mesylate. *Indian Journal of Medical and Paediatric Oncology: Official Journal of Indian Society of Medical & Paediatric Oncology*. 2013 07;34(3):221-223. <https://doi.org/10.4103/0971-5851.123750>
  17. Bansal S, Advani SH. Report of chronic myelogenous leukemia in chronic phase from, Asian Institute of Oncology, Mumbai, 2002-2010. *Indian Journal of Medical and Paediatric Oncology: Official Journal of Indian Society of Medical & Paediatric Oncology*. 2013 07;34(3):168-171. <https://doi.org/10.4103/0971-5851.123717>
  18. Bhamidipati PK, Kantarjian H, Cortes J, Cornelison AM, Jabbour E. Management of imatinib-resistant patients with chronic myeloid leukemia. *Therapeutic advances in hematology*. 2013 04;4(2). <https://doi.org/10.1177/2040620712468289>
  19. Quintás-Cardama A, Cortes JE, O'Brien S, Ravandi F, Borthakur G, Liu D, Bleickardt E, Chen T, Kantarjian HM. Dasatinib early intervention after cytogenetic or hematologic resistance to imatinib in patients with chronic myeloid leukemia. *Cancer*. 2009 07 01;115(13):2912-2921. <https://doi.org/10.1002/cncr.24325>
  20. Mahon F, Réa D, Guilhot J, Guilhot F, Hugué F, Nicolini F, Legros L, Charbonnier A, Guerci A, Varet B, Etienne G, Reiffers J, Rousselot P. Discontinuation of imatinib in patients with chronic myeloid leukaemia who have maintained complete molecular remission for at least 2 years: the prospective, multicentre Stop Imatinib (STIM) trial. *The Lancet. Oncology*. 2010 Nov;11(11):1029-1035. [https://doi.org/10.1016/S1470-2045\(10\)70233-3](https://doi.org/10.1016/S1470-2045(10)70233-3)
  21. Cortes J, Jabbour E, Kantarjian H, Yin CC, Shan J, O'Brien S, Garcia-Manero G, et al. Dynamics of BCR-ABL kinase domain mutations in chronic myeloid leukemia after sequential treatment with multiple tyrosine kinase inhibitors. *Blood*. 2007 Dec 01;110(12):4005-4011. <https://doi.org/10.1182/blood-2007-03-080838>
  22. Horvat I, Antolic MR, Zadro R, Sertić D, Labar B. Clinical significance of T315I ABL kinase domain mutation detection in patients resistant to imatinib mesylate therapy. *Biochemia Medica*. 2010 02 15;20(1):75-81. <https://doi.org/10.11613/BM.2010.009>
  23. Kim S, Kim D, Kim D, Goh H, Jang S, Lee J, Kim W, Kweon I, Park S. Analysis of Bcr-Abl kinase domain mutations in Korean chronic myeloid leukaemia patients: poor clinical outcome of P-loop and T315I mutation is disease phase dependent. *Hematological Oncology*. 2009 Dec;27(4):190-197. <https://doi.org/10.1002/hon.894>
  24. Nicolini Fe, Mauro Mj, Martinelli G, Kim Dw, Soverini S, Müller MC, Hochhaus A, et al. Epidemiologic study on survival of chronic myeloid leukemia and Ph(+) acute lymphoblastic leukemia patients with BCR-ABL T315I mutation. *Blood*. 2009 Dec 17;114(26). <https://doi.org/10.1182/blood-2009-04-219410>
  25. Mat Yusoff Y, Abu Seman Z, Othman N, Kamaluddin NR, Esa E, Zulkiply NA, Abdullah J, Zakaria Z. Prevalence of BCR-ABL T315I Mutation in Malaysian Patients with Imatinib-Resistant Chronic Myeloid Leukemia. *Asian Pacific journal of cancer prevention : APJCP*. 2018 Dec 25;19(12). <https://doi.org/10.31557/APJCP.2018.19.12.3317>
  26. Yap E, Tumian NR, Azma RZ, Sharifah NA, Salwati S, Hamidah NH, Elias MH, Wong CI. Primary imatinib resistance in chronic myeloid leukemia patients in a developing country: BCR-ABL kinase domain mutations or BCR-ABL independent mechanisms?. *The Malaysian journal of pathology*. 2017 08;39(2).
  27. Pagnano KBB, Bendit I, Boquimpani C, De Souza CA, Miranda ECM, Zalcborg I, Larripa I, et al. BCR-ABL mutations in chronic myeloid leukemia treated with tyrosine kinase inhibitors and impact on survival. *Cancer Investigation*. 2015;33(9):451-458. <https://doi.org/10.3109/07357907.2015.1065499>
  28. Naqvi K, Cortes JE, Luthra R, O'Brien S, Wierda W, Borthakur G, Kadia T, et al. Characteristics and outcome of chronic myeloid leukemia patients with E255K/V BCR-ABL kinase domain mutations. *International Journal of Hematology*. 2018 06;107(6):689-695. <https://doi.org/10.1007/s12185-018-2422-6>
  29. Xue M, Cheng J, Zhao J, Zhang S, Jian J, Qiao Y, Liu B. Outcomes of 219 chronic myeloid leukaemia patients with additional chromosomal abnormalities and/or tyrosine kinase domain mutations. *International journal of laboratory hematology*. 2019 02;41(1). <https://doi.org/10.1111/ijlh.12928>
  30. Jiang X, Zhao Y, Smith C, Gasparetto M, Turhan A, Eaves A, Eaves C. Chronic myeloid leukemia stem cells possess multiple unique features of resistance to BCR-ABL targeted therapies. *Leukemia*. 2007 05;21(5):926-935. <https://doi.org/10.1038/sj.leu.2404609>
  31. Redaelli S, Piazza R, Rostagno R, Magistroni V, Perini

- P, Marega M, Gambacorti-Passerini C, Boschelli F. Activity of bosutinib, dasatinib, and nilotinib against 18 imatinib-resistant BCR/ABL mutants. *Journal of Clinical Oncology: Official Journal of the American Society of Clinical Oncology*. 2009 01 20;27(3):469-471. <https://doi.org/10.1200/JCO.2008.19.8853>
32. O'Hare T, Shakespeare WC, Zhu X, Eide CA, Rivera VM, Wang F, Adrian LT, et al. AP24534, a Pan-BCR-ABL Inhibitor for Chronic Myeloid Leukemia, Potently Inhibits the T315I Mutant and Overcomes Mutation-Based Resistance. *Cancer cell*. 2009 Nov 11;16(5):401. <https://doi.org/10.1016/j.ccr.2009.09.028>
33. Kimura S, Ando T, Kojima K. BCR-ABL Point Mutations and TKI Treatment in CML Patients. *J Hematol Transfus*. 2014;2:1022.
34. Sharma SV, Kumar S, Vijayakumar AR, Seth T, Mishra P, Mahapatra M, Sazawal S, Velpandian T, Saxena R. Utility of the trough plasma imatinib level monitoring at two time points in patients with the chronic myeloid leukemia-chronic phase. *Journal of Cancer Research and Therapeutics*. 2014;10(2):305-308. <https://doi.org/10.4103/0973-1482.136583>



This work is licensed under a Creative Commons Attribution-Non Commercial 4.0 International License.